

Researching, modeling and operating the New York Central Railroad's High Line In HO Scale



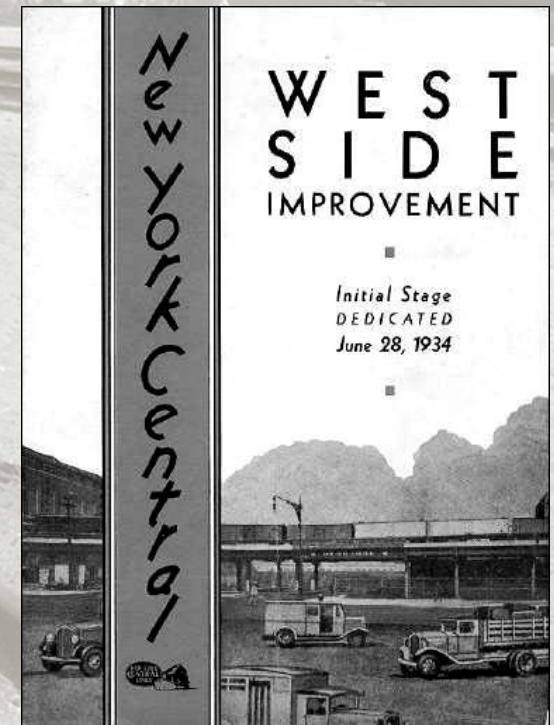
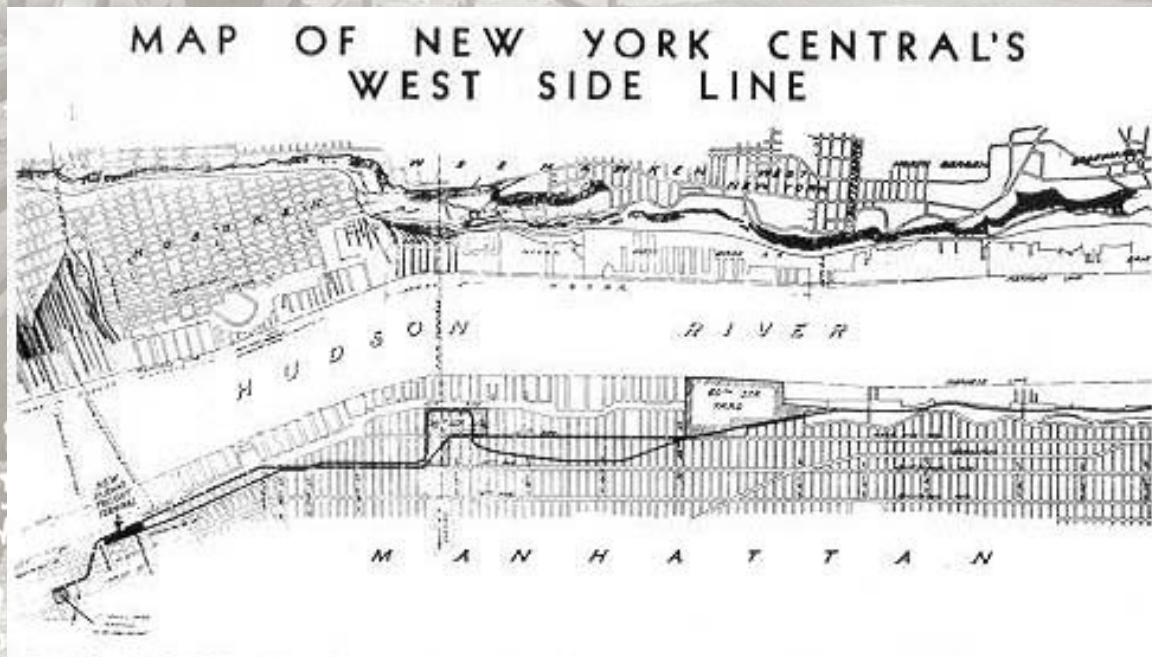
Presented By: David Ramos
May 17, 2014

Photo's From
Friend of the High Line
Mike MacDonald's Photo Bucket Site

Researching, modeling and operating the New York Central Railroad's High Line In HO Scale

What is the High Line?

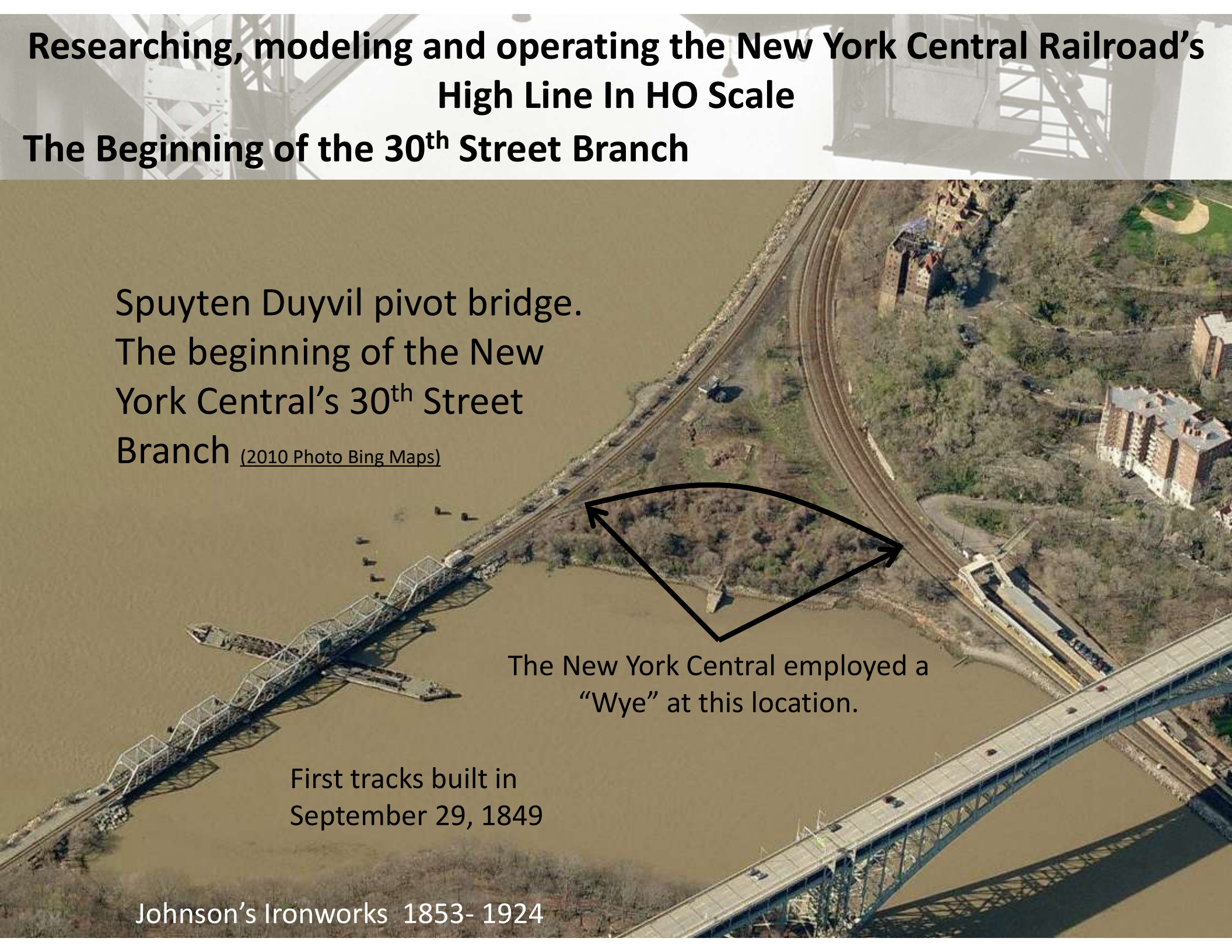
The “High Line” is the elevated portion of the 30th Street Branch of the New York Central Railroad in New York City. The Elevated portion of the 30th Street Branch or High Line begins its run at 33rd Street and heads south to St’ Johns Park Terminal. This was built as a grade elimination project as part of the West Side Improvement Project.



Researching, modeling and operating the New York Central Railroad's High Line In HO Scale

The Beginning of the 30th Street Branch

Spuyten Duyvil pivot bridge.
The beginning of the New
York Central's 30th Street
Branch (2010 Photo Bing Maps)



The New York Central employed a
“Wye” at this location.

First tracks built in
September 29, 1849

Johnson's Ironworks 1853- 1924

Researching, modeling and operating the New York Central Railroad's High Line In HO Scale

What was before the High Line?

Before the West Side Improvement Project the New York Central ran at street level through Manhattan from 72nd Yard to the original St. John's Park Terminal.



8403
No. 58 Taken G
N.Y.C. VIADUCT
N.Y.
N.Y. CENTRAL
GEORGE A. FULLER C

Researching, modeling and operating the New York Central Railroad's High Line In HO Scale

St John's Park Freight Terminal Late 1800's



As the city grew, the expanding warehouse district began to encroach on the neighborhood, and its seclusion was shattered in 1851 when the Hudson River Railroad ran tracks along Hudson St. Rich homeowners moved elsewhere, and St John's Chapel went into financial difficulty.

In 1866, Trinity parish sold the park to Commodore Cornelius Vanderbilt for \$400,000, who built a freight terminal on the site for the Hudson River Railroad.

Researching, modeling and operating the New York Central Railroad's High Line In HO Scale

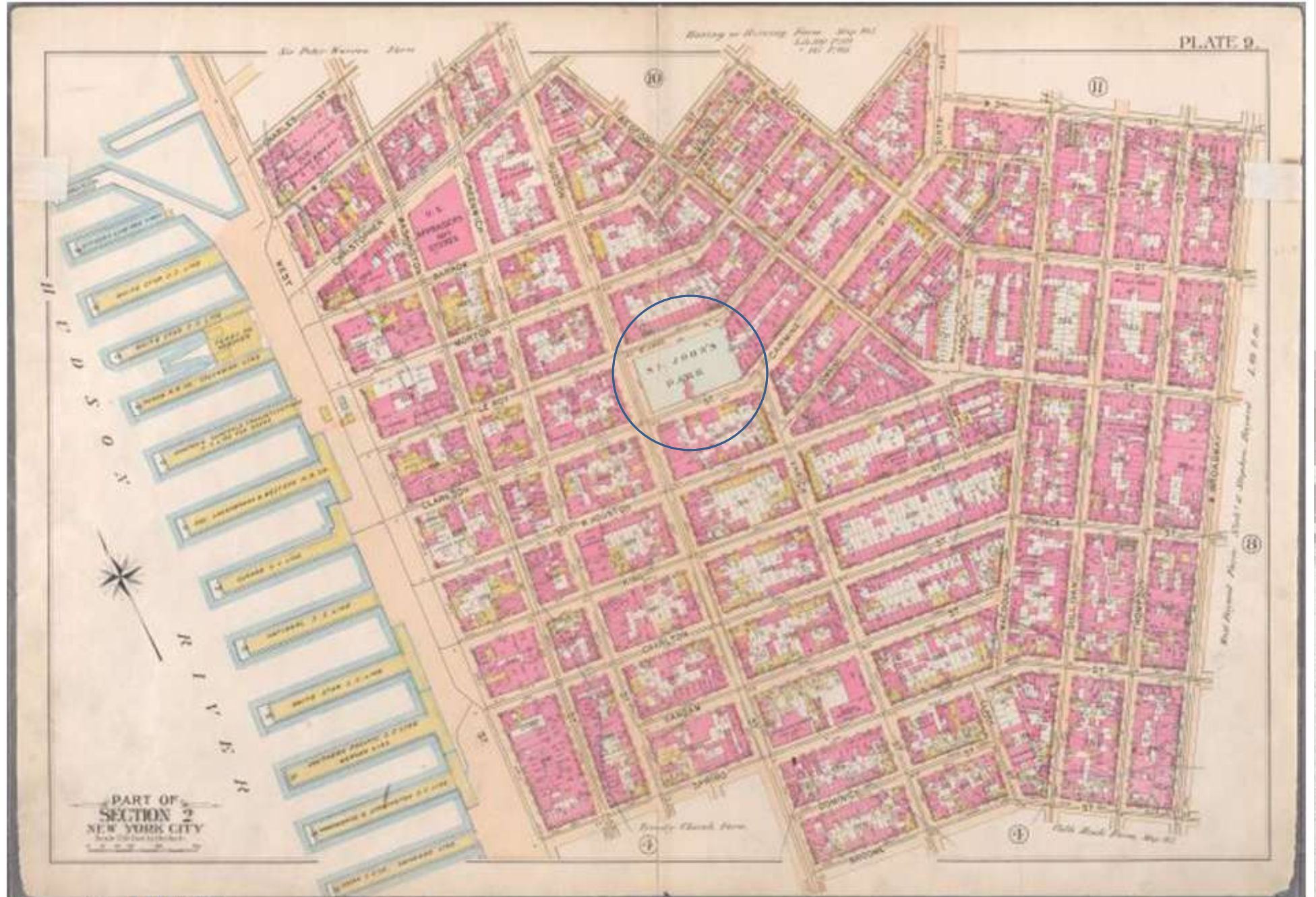


Image ID: 1516765

George W. and Walter S. Bromley Insurance Map 1897 NYPL Digital Collection

Researching, modeling and operating the New York Central Railroad's High Line In HO Scale

Hudson River Railroad Passenger Station at Chambers Street Built 1851



Researching, modeling and operating the New York Central Railroad's High Line In HO Scale

Original St John's Park Freight Terminal - 1920's



NYC
DES-3



8403
No. 58
N.Y.C.
N.Y.C.
GEORGE

Researching, modeling and operating the New York Central Railroad's High Line In HO Scale

Original St John's Park Freight Terminal



Researching, modeling and operating the New York Central Railroad's High Line In HO Scale

Original St John's Park Freight Terminal



Researching, modeling and operating the New York Central Railroad's High Line In HO Scale

Original St John's Park Freight Terminal

Here is a photo of the decorative relief along the top of St. John's Park. That is a statue of Commodore Cornelius Vanderbilt surrounded by symbols of his empire. At his feet is a plaque the reads "Erected 1868"



Researching, modeling and operating the New York Central Railroad's High Line In HO Scale

Original St John's Park Freight Terminal Demolition



Researching, modeling and operating the New York Central Railroad's High Line In HO Scale

Before the High Line.



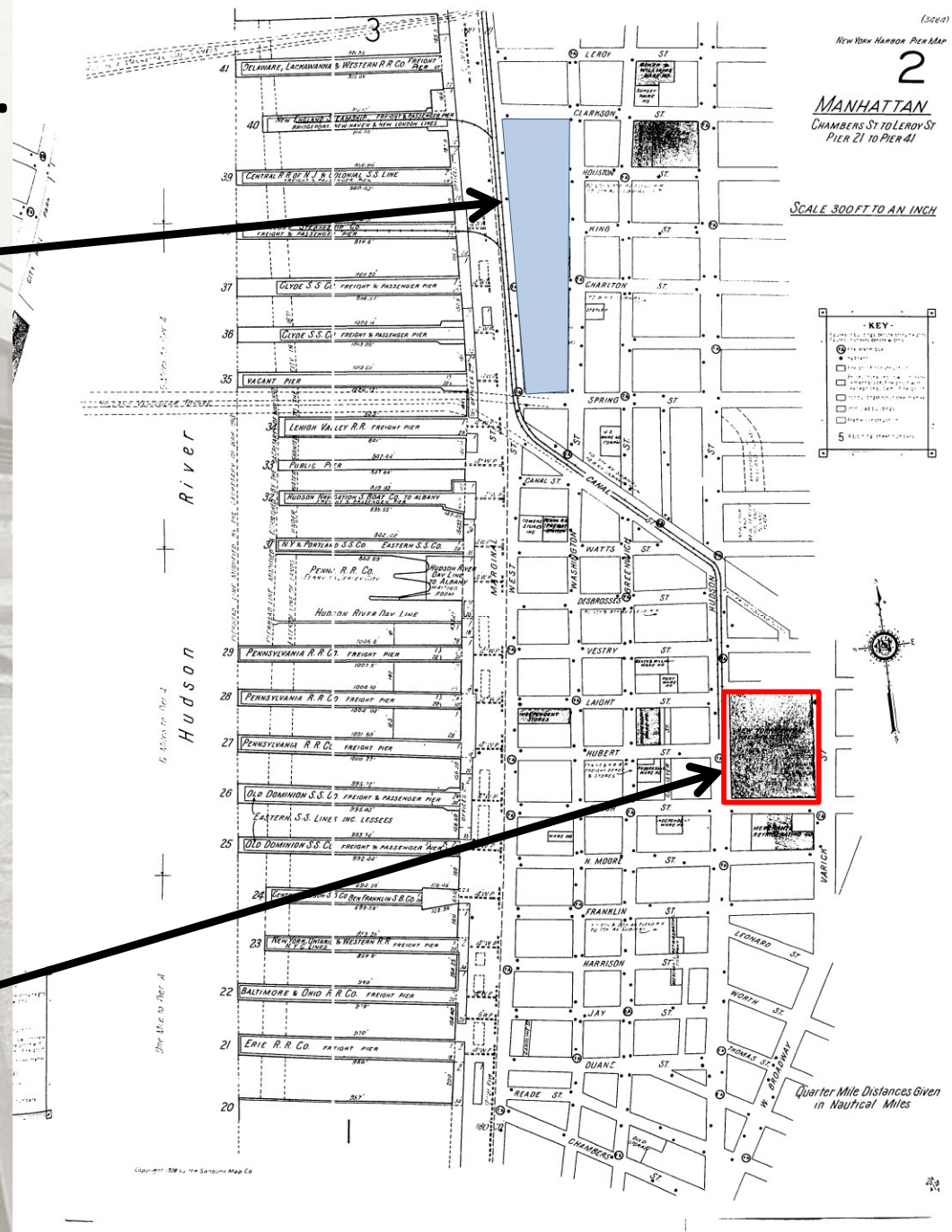
Researching, modeling and operating the New York Central Railroad's High Line In HO Scale

Before the High Line.

New St. John's Park Freight Terminal

Sanborn Maps Showing the pre High Line Route of the New York Central.

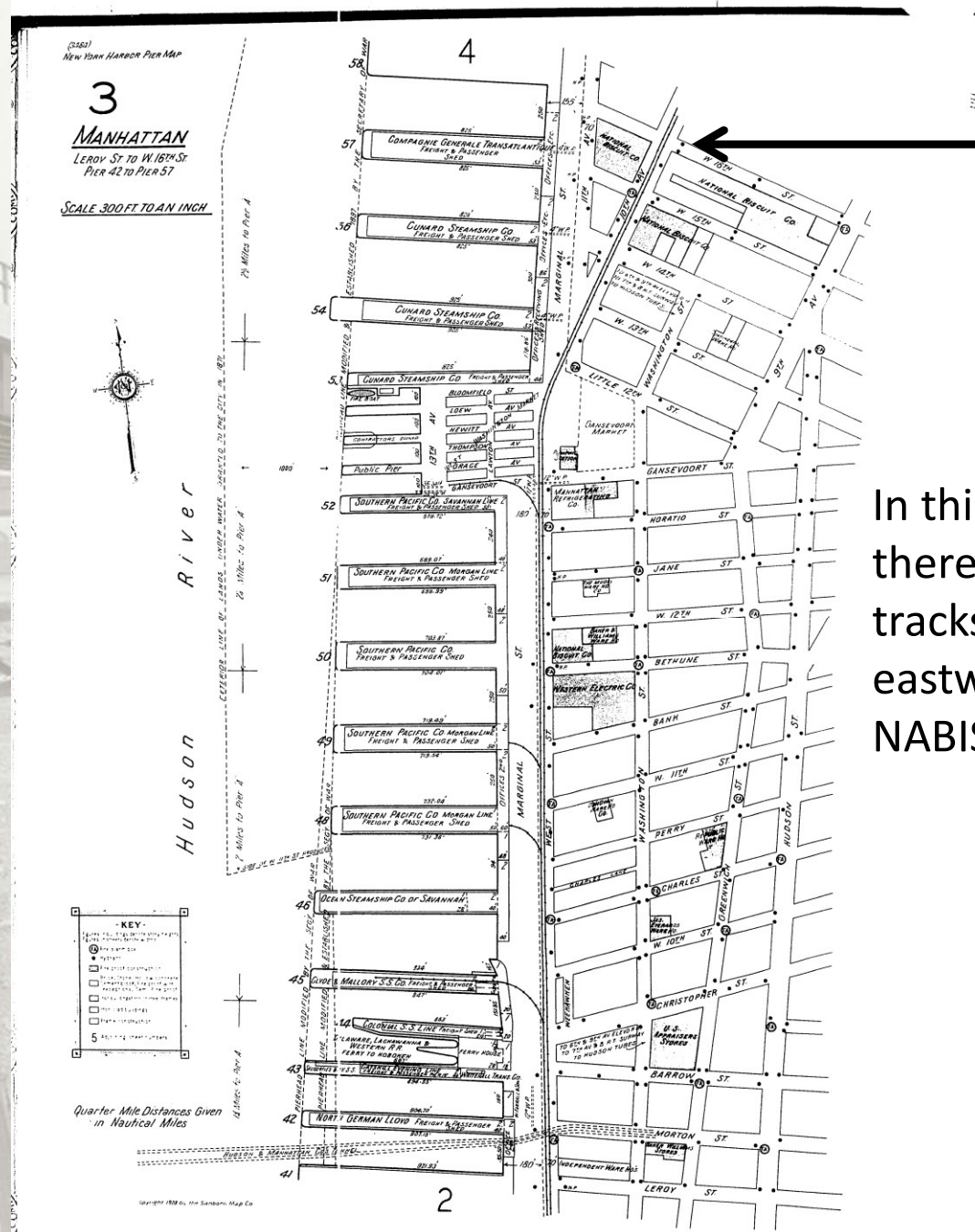
Original St. John's Park Freight Terminal



Researching, modeling and operating the New York Central Railroad's High Line In HO Scale

Before the High Line.

Sanborn Maps Showing the pre High Line Route of the New York Central.

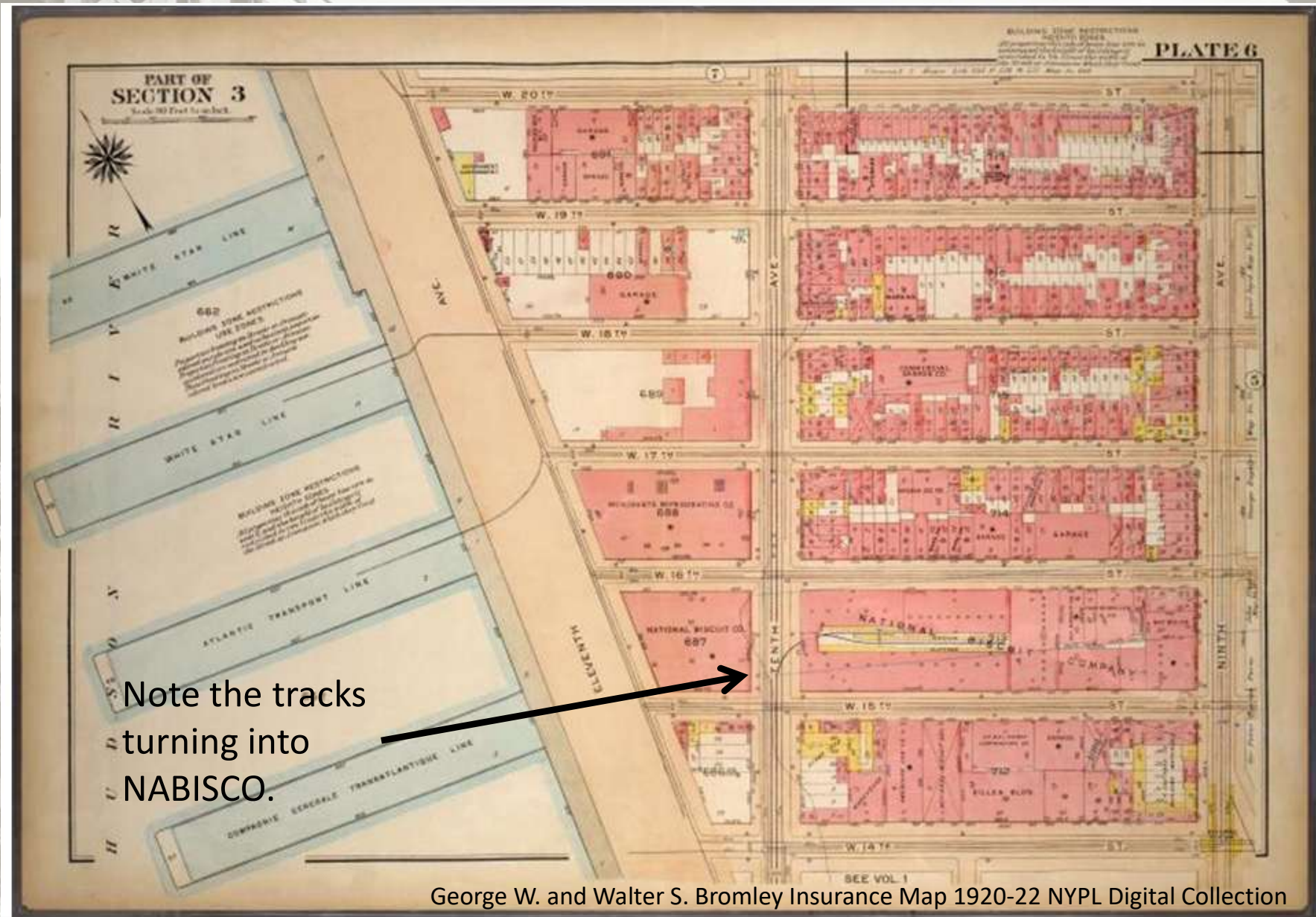


In this map there is no tracks turning eastward into NABISCO.

8403
No. 58 Taken G-3-35
N.Y.C. VIADUCT Building
N.Y. City
N.Y. CENTRAL
GEORGE A. FULLER COMPANY

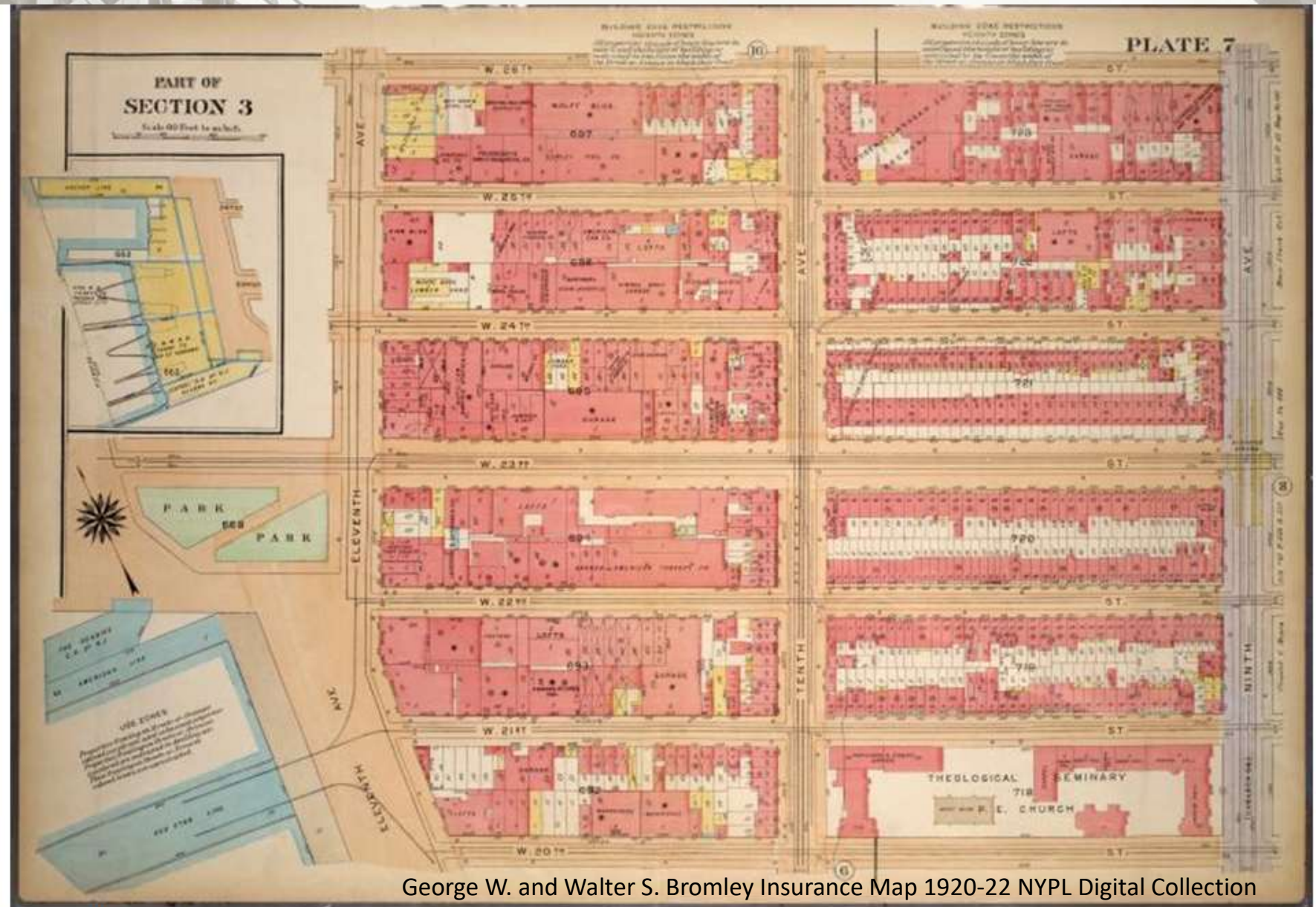
Researching, modeling and operating the New York Central Railroad's High Line In HO Scale

Before the High Line.



Researching, modeling and operating the New York Central Railroad's High Line In HO Scale

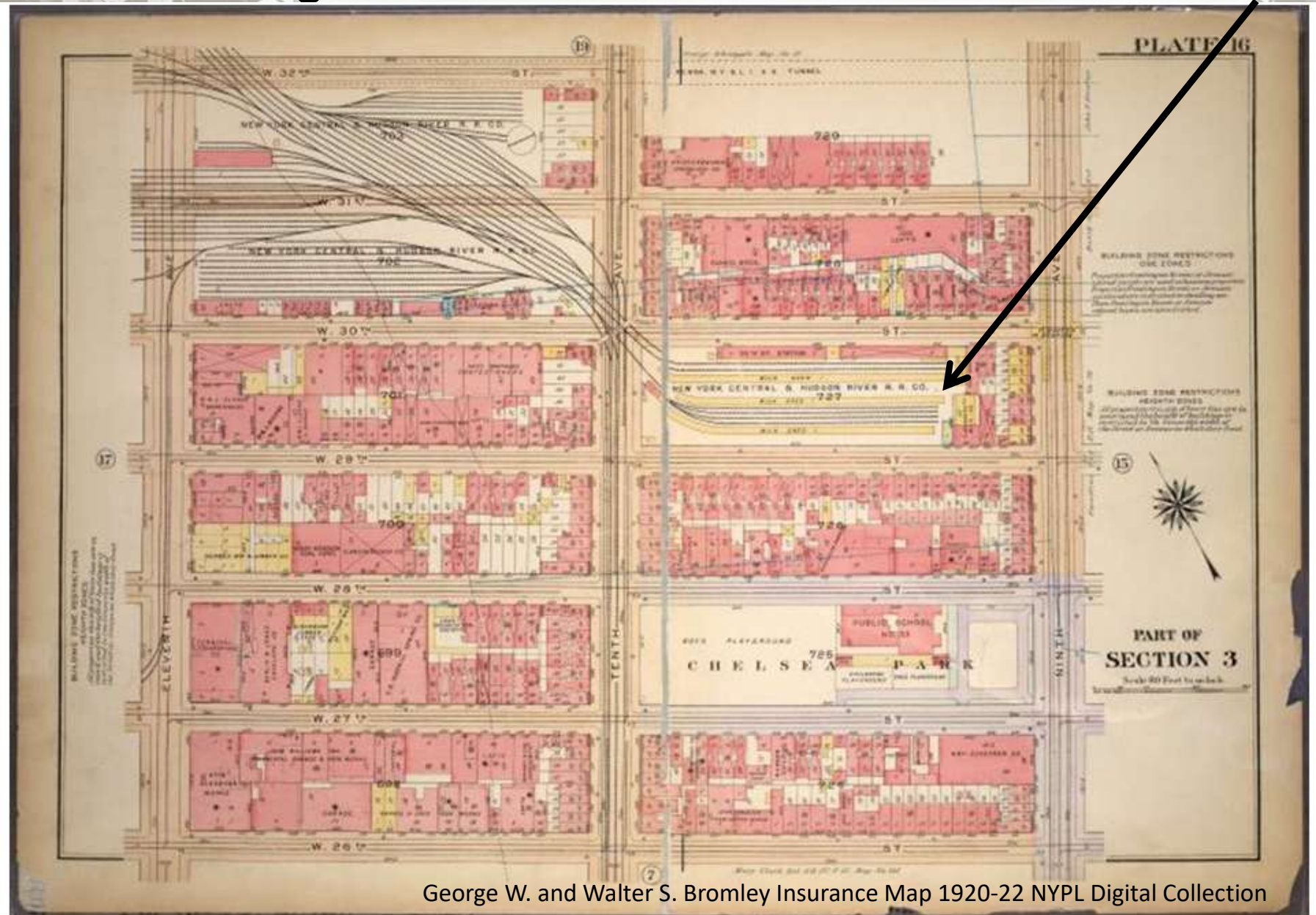
Before the High Line.



Researching, modeling and operating the New York Central Railroad's High Line In HO Scale

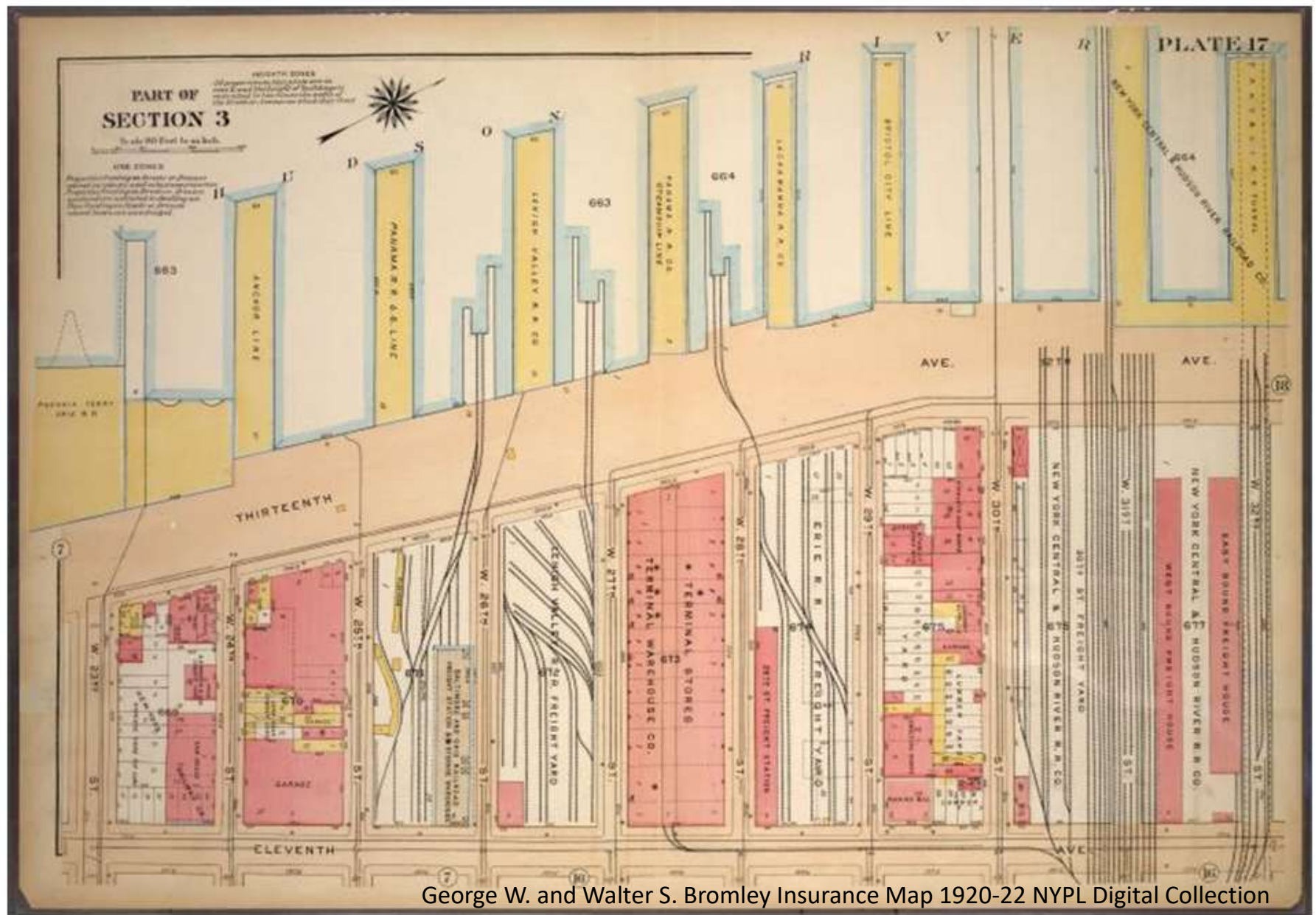
Before the High Line.

Milk Shed



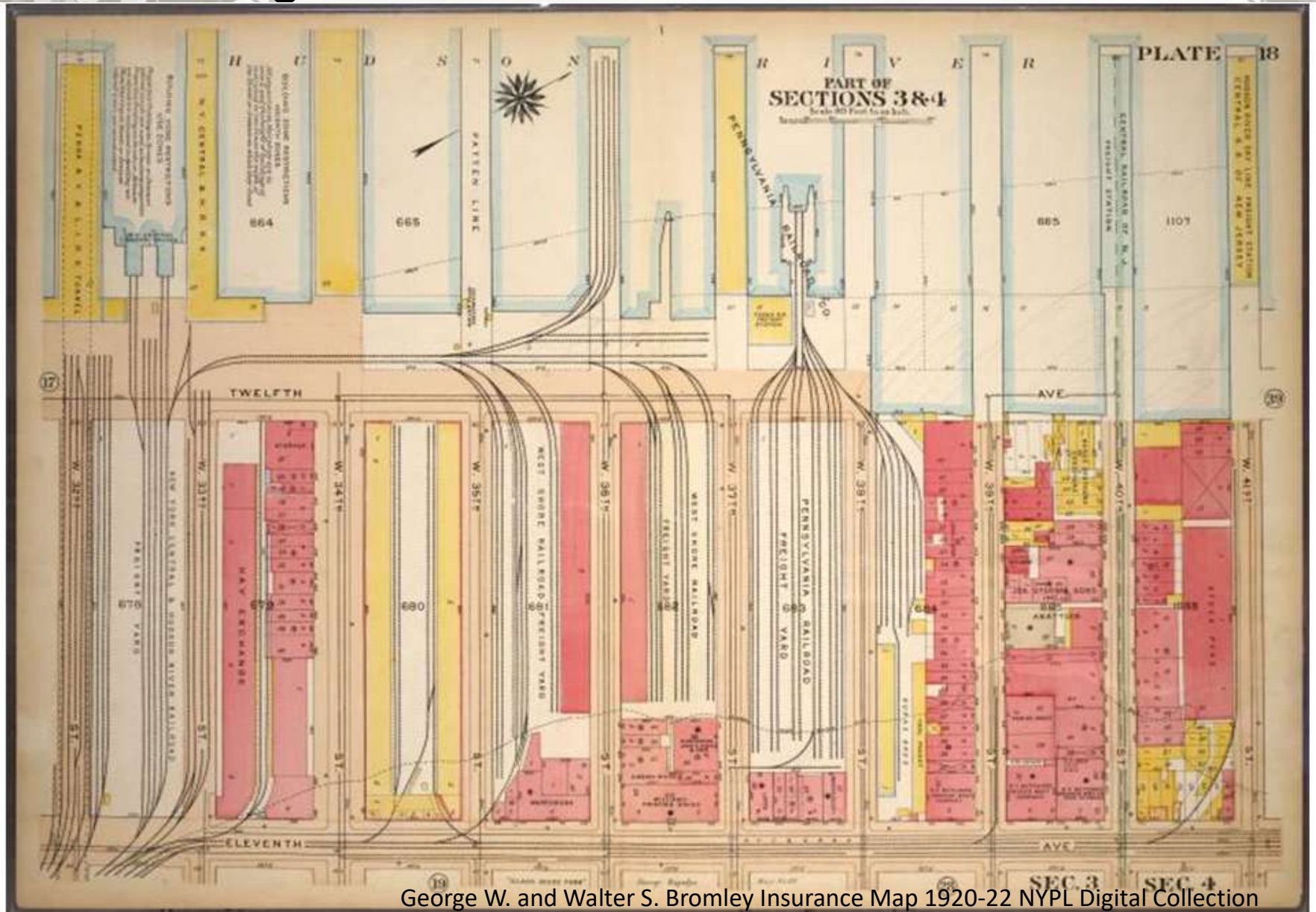
Researching, modeling and operating the New York Central Railroad's High Line In HO Scale

Before the High Line.



Researching, modeling and operating the New York Central Railroad's High Line In HO Scale

Before the High Line.



George W. and Walter S. Bromley Insurance Map 1920-22 NYPL Digital Collection

Before the High Line.



Researching, modeling and operating the New York Central Railroad's High Line In HO Scale

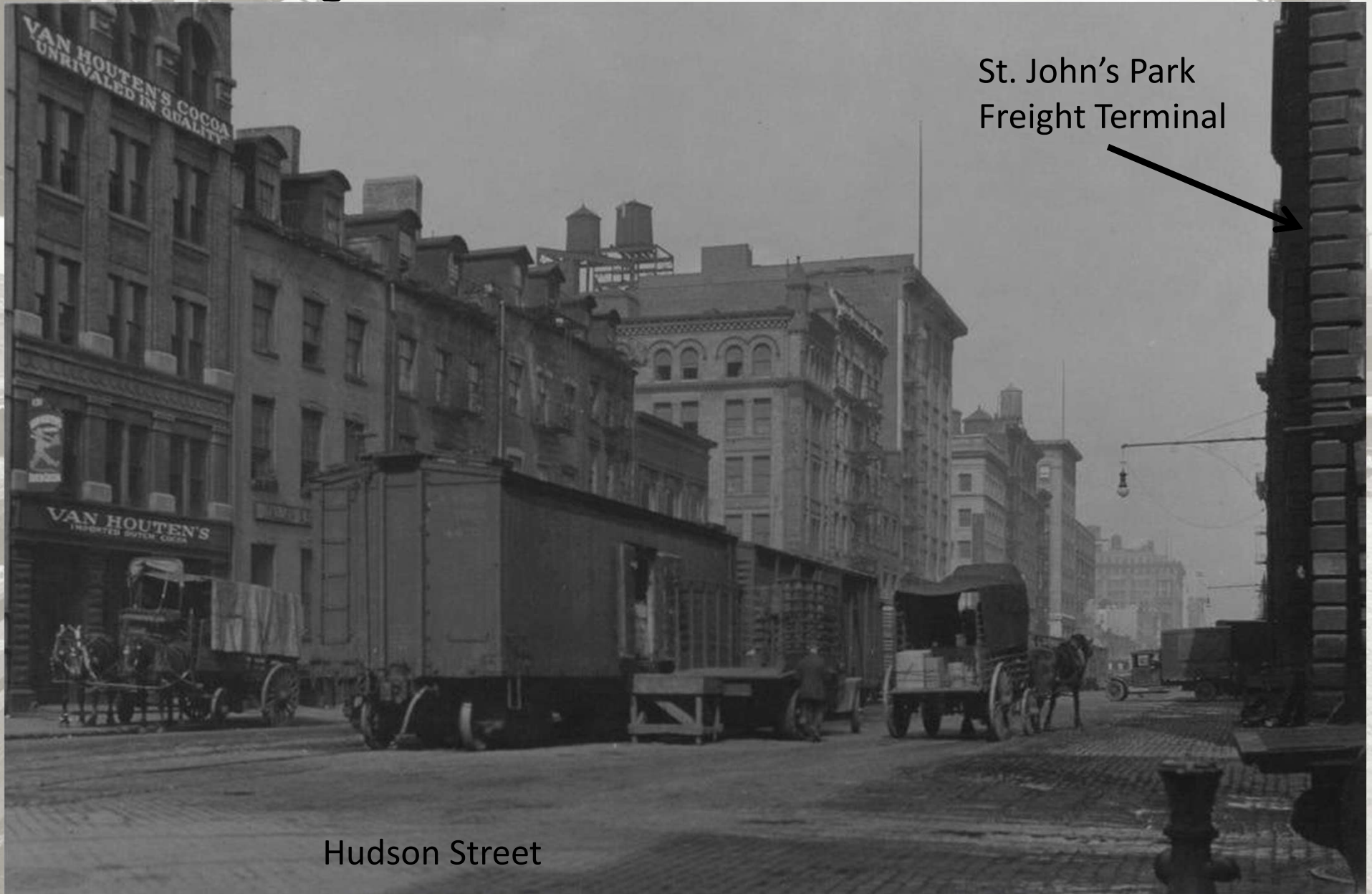
Before the High Line.



Leaving St. John's Park

Researching, modeling and operating the New York Central Railroad's High Line In HO Scale

Before the High Line.



St. John's Park
Freight Terminal

Hudson Street

Researching, modeling and operating the New York Central Railroad's High Line In HO Scale

Before the High Line.



St. John's Park
Freight Terminal

Hudson Street

Researching, modeling and operating the New York Central Railroad's High Line In HO Scale

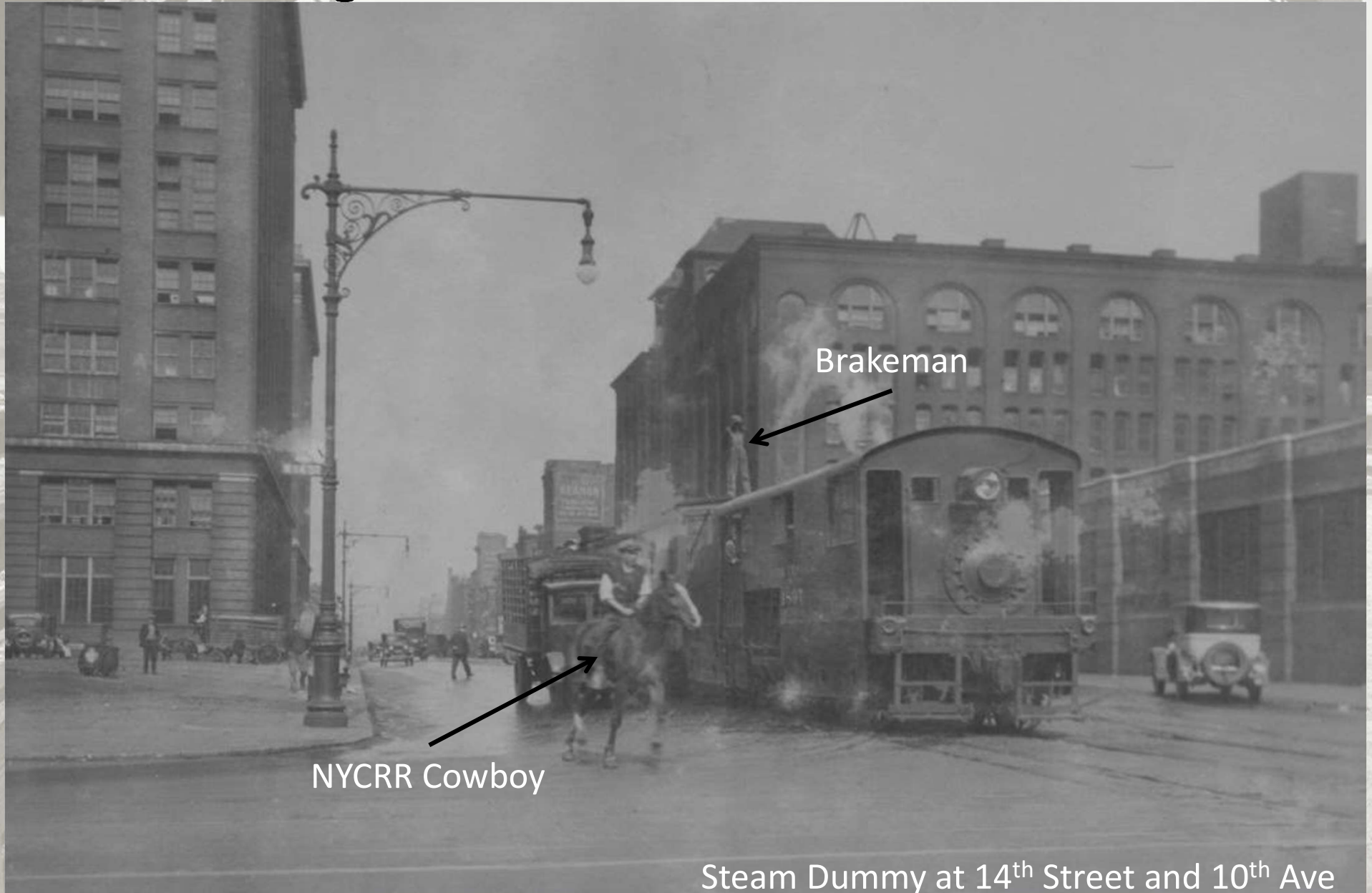
Before the High Line.



Making the turn off of Canal St.

Researching, modeling and operating the New York Central Railroad's High Line In HO Scale

Before the High Line.



Researching, modeling and operating the New York Central Railroad's High Line In HO Scale

Before the High Line.



Researching, modeling and operating the New York Central Railroad's High Line In HO Scale

Before the High Line.



Researching, modeling and operating the New York Central Railroad's High Line In HO Scale

Before the High Line.



Researching, modeling and operating the New York Central Railroad's High Line In HO Scale

Before the High Line.



19th Street and 10th Avenue

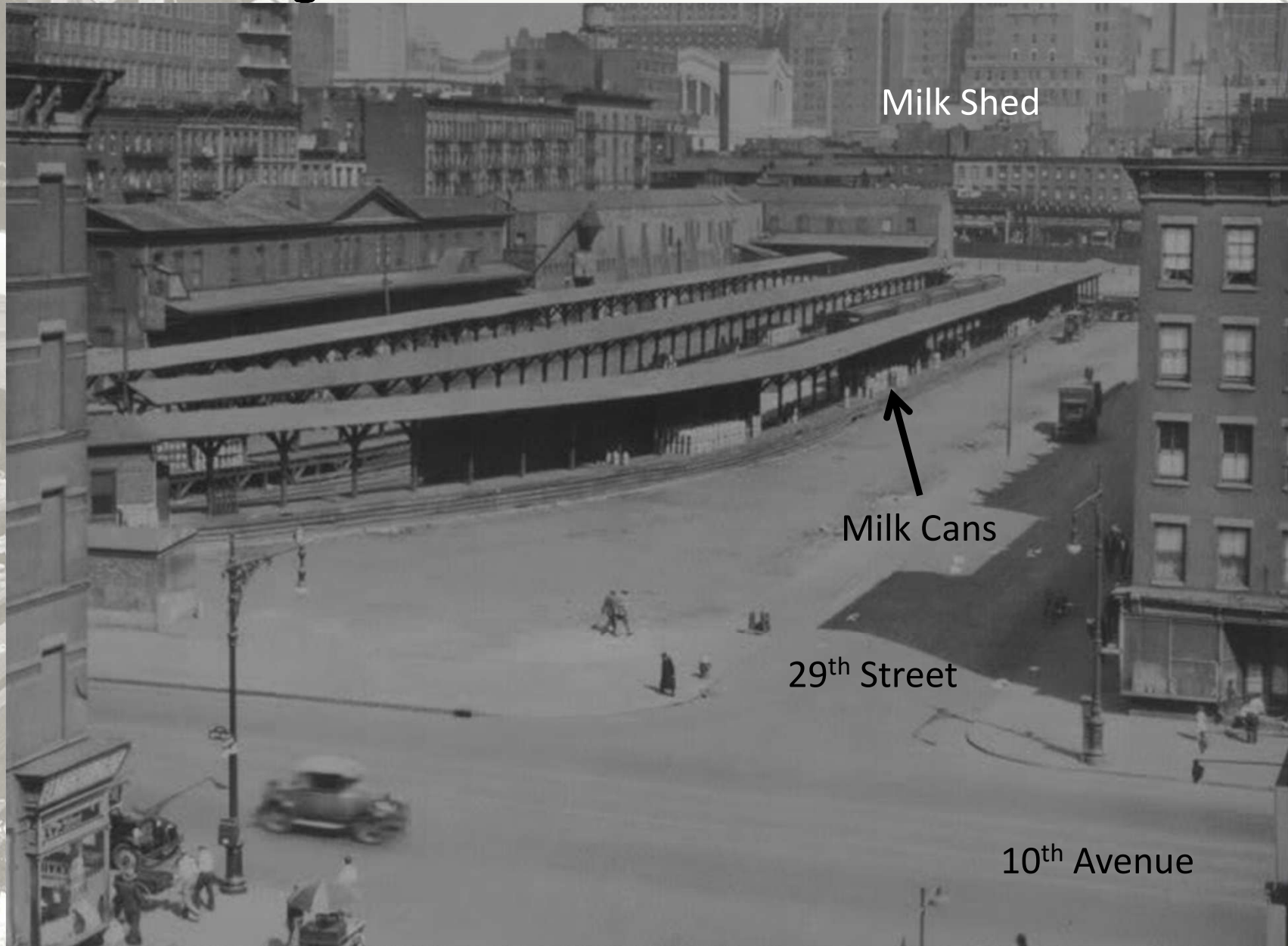
Researching, modeling and operating the New York Central Railroad's High Line In HO Scale

Before the High Line.



Researching, modeling and operating the New York Central Railroad's High Line In HO Scale

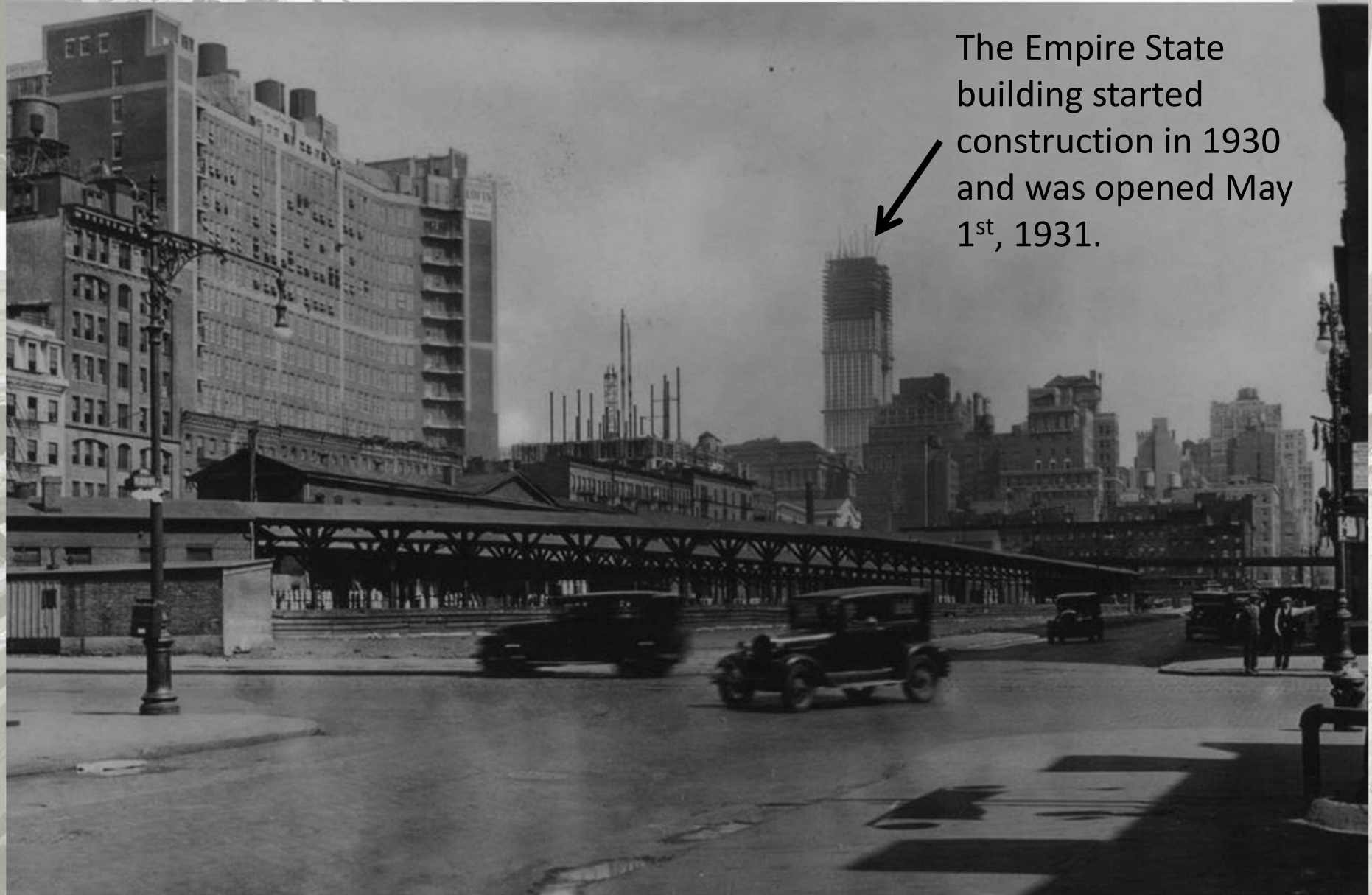
Before the High Line.



Researching, modeling and operating the New York Central Railroad's High Line In HO Scale

Before the High Line.

1930



The Empire State building started construction in 1930 and was opened May 1st, 1931.

Researching, modeling and operating the New York Central Railroad's High Line In HO Scale

Before the High Line.



Researching, modeling and operating the New York Central Railroad's High Line In HO Scale

Before the High Line.



Researching, modeling and operating the New York Central Railroad's High Line In HO Scale

Before the High Line.



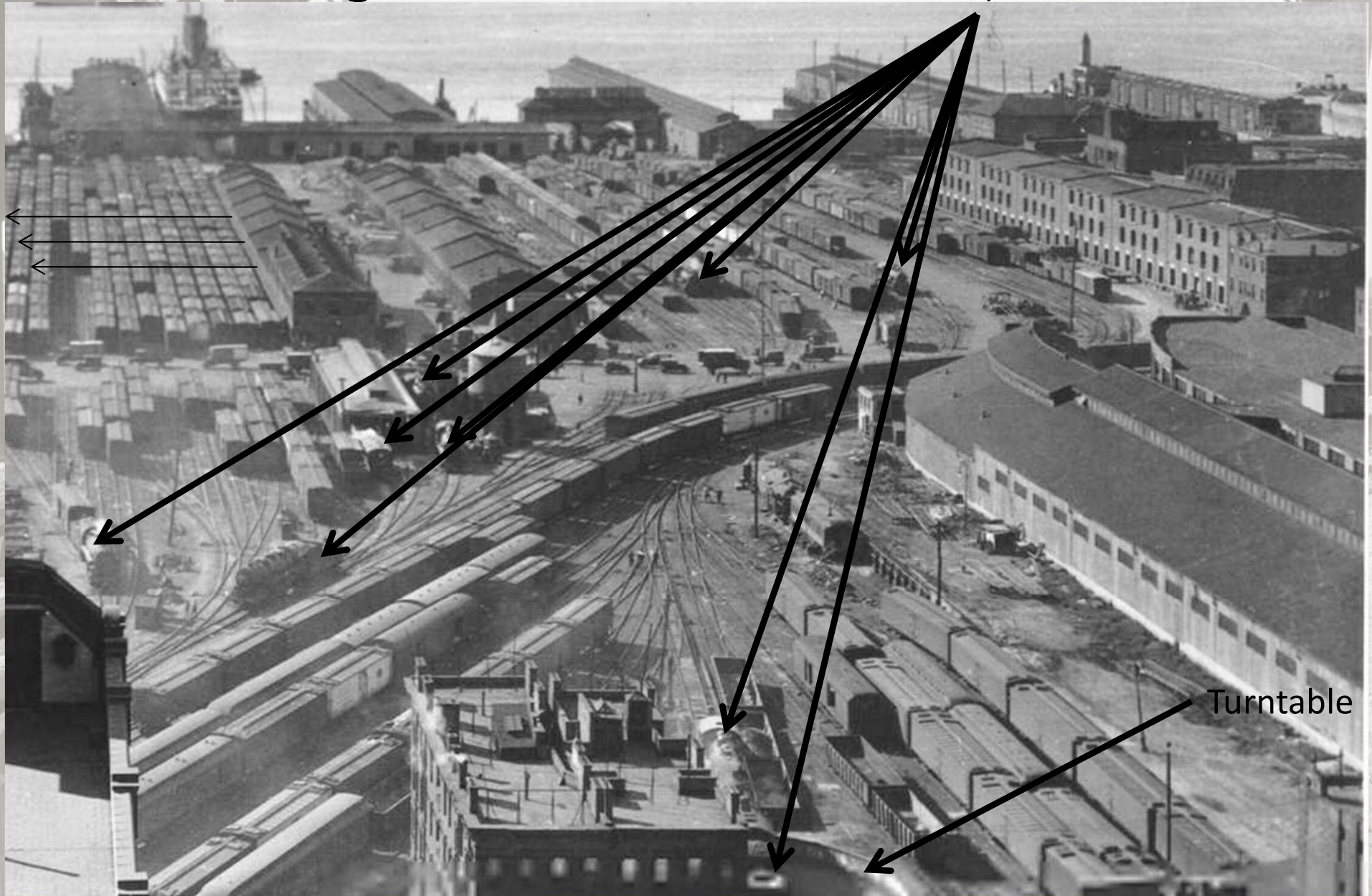
Turning East off of 11th Ave

Researching, modeling and operating the New York Central Railroad's High Line In HO Scale

9 steam engines!

Before the High Line.

Steam power



Turntable

Researching, modeling and operating the New York Central Railroad's High Line In HO Scale

Before the High Line.



Mail Train

Researching, modeling and operating the New York Central Railroad's High Line In HO Scale

Before the High Line.



35th Street

Researching, modeling and operating the New York Central Railroad's High Line In HO Scale

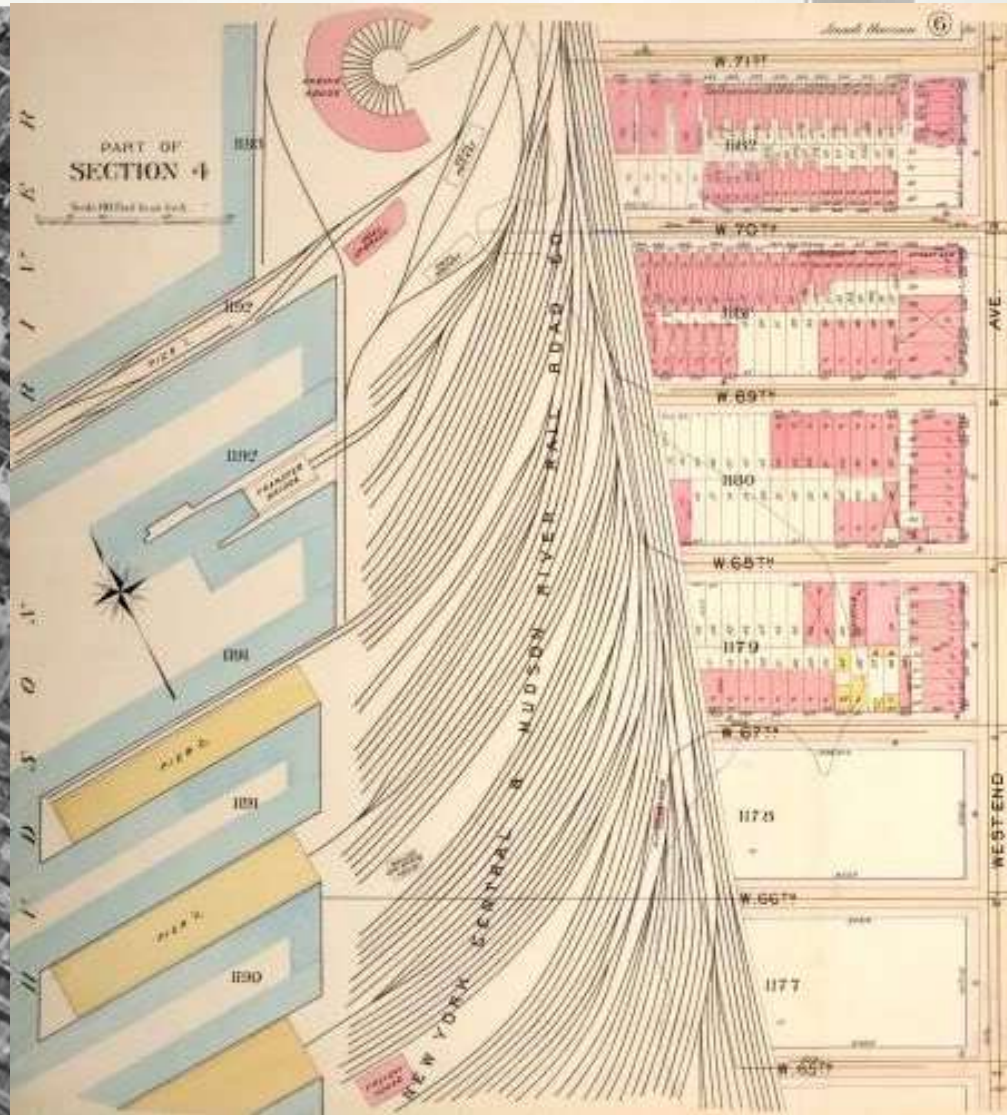
Before the High Line.



11th Ave and 42nd Street

Researching, modeling and operating the New York Central Railroad's High Line In HO Scale

Before the High Line.



N.Y. CENTRAL RAILROAD
GEORGE A. FULLER COMPANY

72nd Street Yard

Researching, modeling and operating the New York Central Railroad's High Line In HO Scale

Before the High Line.



72nd Street Yard at 60th Street

Researching, modeling and operating the New York Central Railroad's High Line In HO Scale

Before the High Line.

Hopper on a
fueling Trestle for
the steam
locomotives



Researching, modeling and operating the New York Central Railroad's High Line In HO Scale

Why Build the High Line?



31st Street and 11th Avenue

Researching, modeling and operating the New York Central Railroad's High Line In HO Scale

Building the High Line.



Researching, modeling and operating the New York Central Railroad's High Line In HO Scale

Building the High Line.

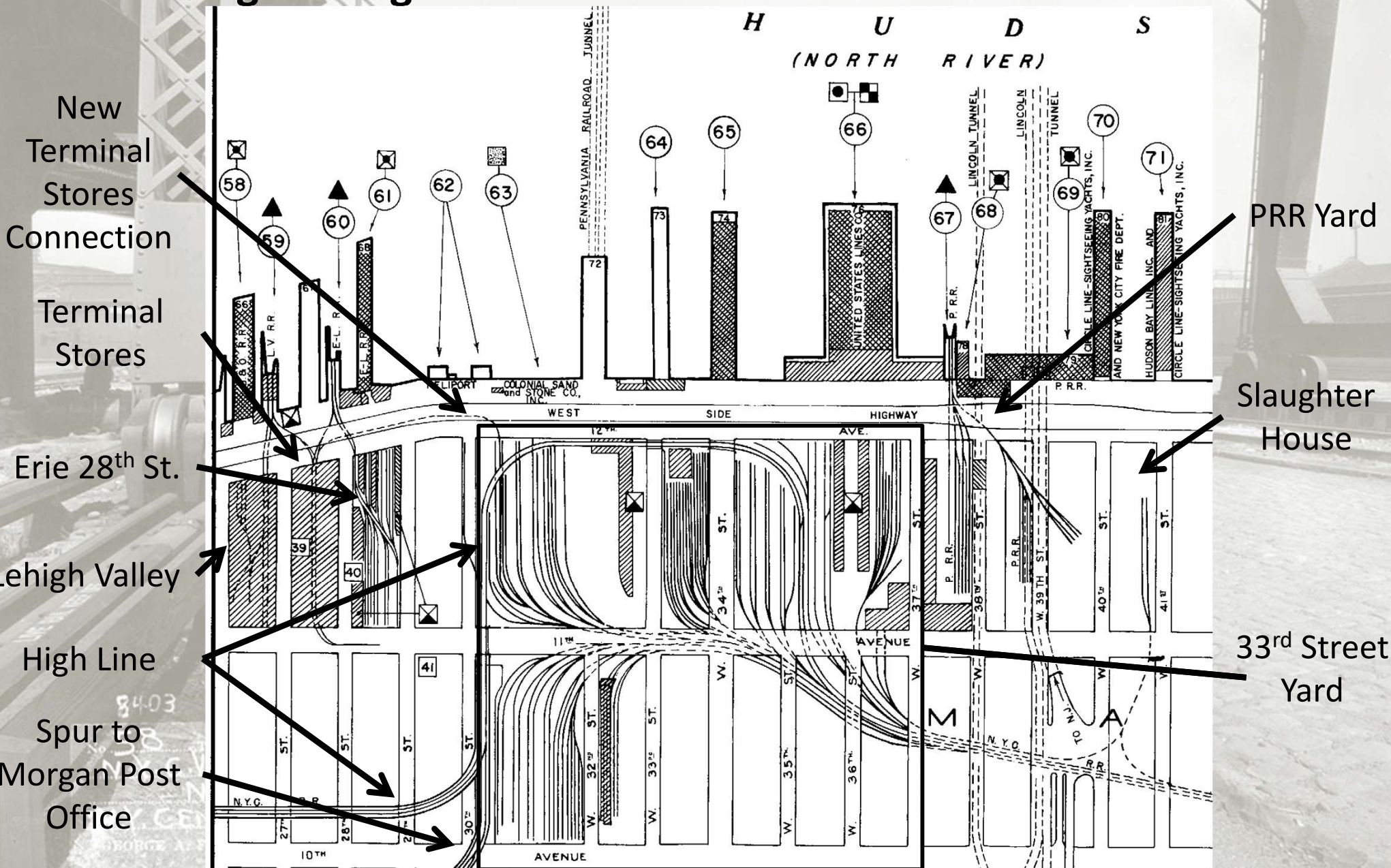


8403
No. 58 Taken
N.Y.C. VIADUCT
N.Y.
N.Y. CENTRAL
GEORGE A. FULLER

Researching, modeling and operating the New York Central Railroad's High Line In HO Scale

← South or Railroad East

Building the High Line.



Researching, modeling and operating the New York Central Railroad's High Line In HO Scale

Building the High Line.



Spur to
Slaughter
House

8403
No. 58 Taken
N.Y.C. VIND
N.Y.
N.Y. CENT
GEORGE A. FUL

Researching, modeling and operating the New York Central Railroad's High Line In HO Scale

Building the High Line.



Researching, modeling and operating the New York Central Railroad's High Line In HO Scale

Building the High Line.



Researching, modeling and operating the New York Central Railroad's High Line In HO Scale

Building the High Line.



8300
No. 54 Taken 6-3-33
N.Y.C. VIADUCT - Building
N.Y.
N.Y. CENTRAL
GEORGE A. FOLEY COMPANY

Researching, modeling and operating the New York Central Railroad's High Line In HO Scale

Building the High Line.



Looking East with 30th
Street to the Right

Researching, modeling and operating the New York Central Railroad's High Line In HO Scale

Building the High Line.



Researching, modeling and operating the New York Central Railroad's High Line In HO Scale

Building the High Line.



Researching, modeling and operating the New York Central Railroad's High Line In HO Scale

Building the High Line.



Researching, modeling and operating the New York Central Railroad's High Line In HO Scale

Building the High Line.



Researching, modeling and operating the New York Central Railroad's High Line In HO Scale

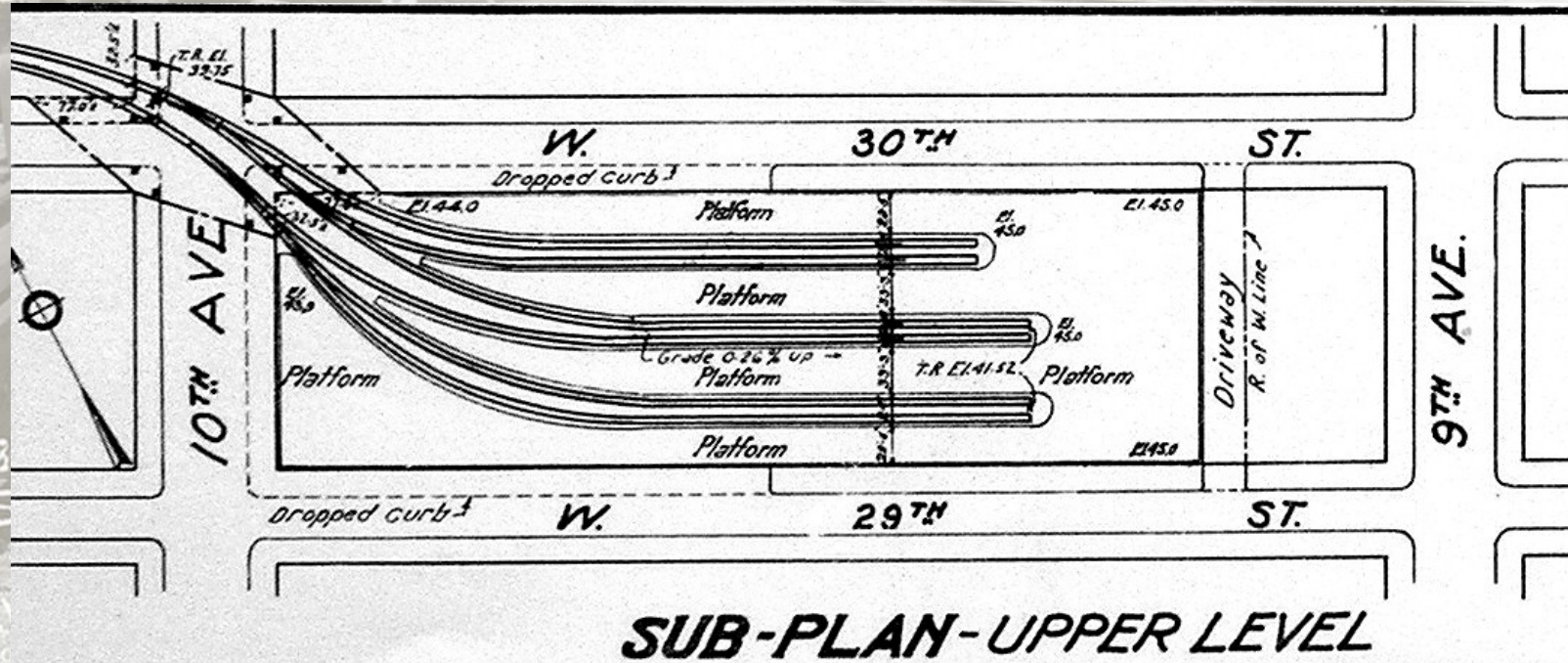
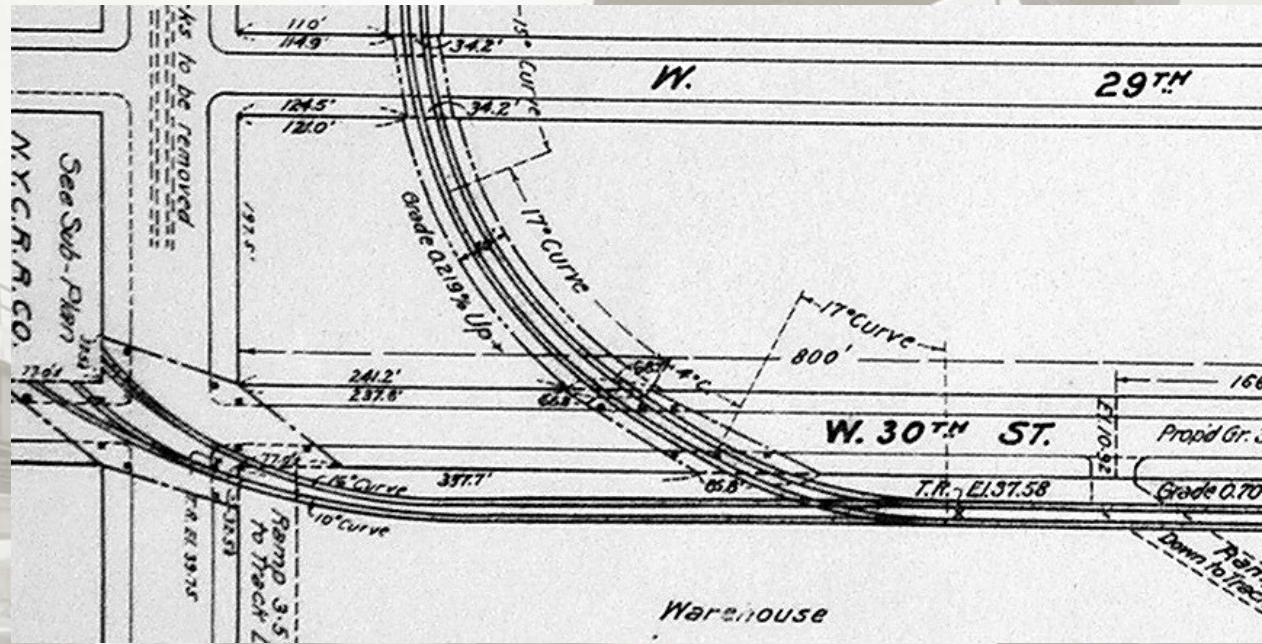
Building the High Line.



Researching, modeling and operating the New York Central Railroad's High Line In HO Scale

Building the High Line.

Track plan of the Morgan Post office and the spur leading to it off the High Line.



Researching, modeling and operating the New York Central Railroad's High Line In HO Scale

Building the High Line.



Researching, modeling and operating the New York Central Railroad's High Line In HO Scale

Building the High Line.



Researching, modeling and operating the New York Central Railroad's High Line In HO Scale

Building the High Line.



Researching, modeling and operating the New York Central Railroad's High Line In HO Scale

Building the High Line.



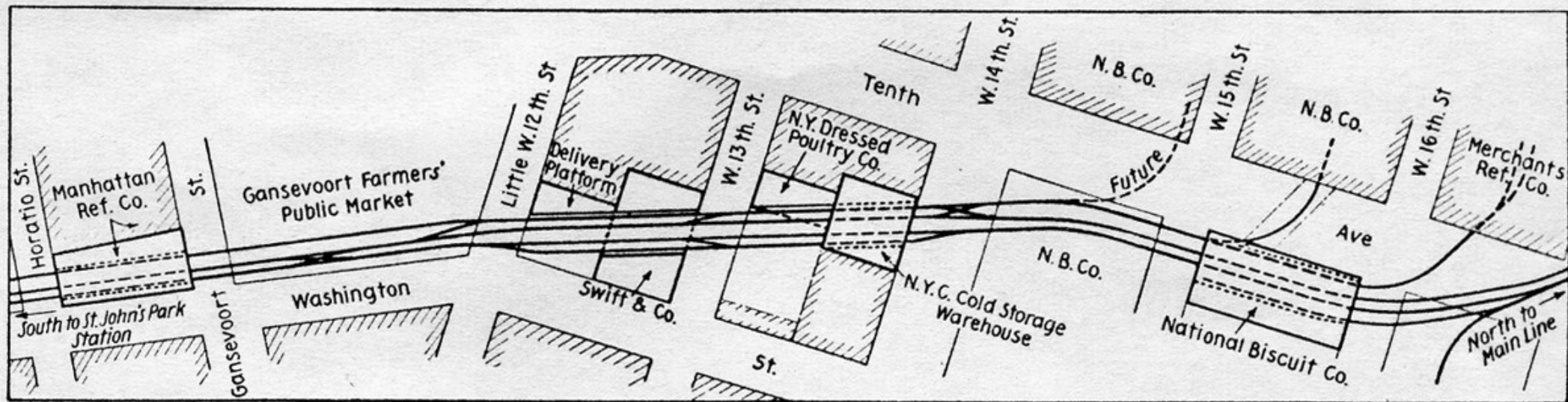
Researching, modeling and operating the New York Central Railroad's High Line In HO Scale

Building the High Line.

Vol. 96, No. 25

RAILWAY AGE

911



The Elevated Tracks Between West Seventeenth and Horatio Streets, Showing Typical Industrial Air-Rights Development



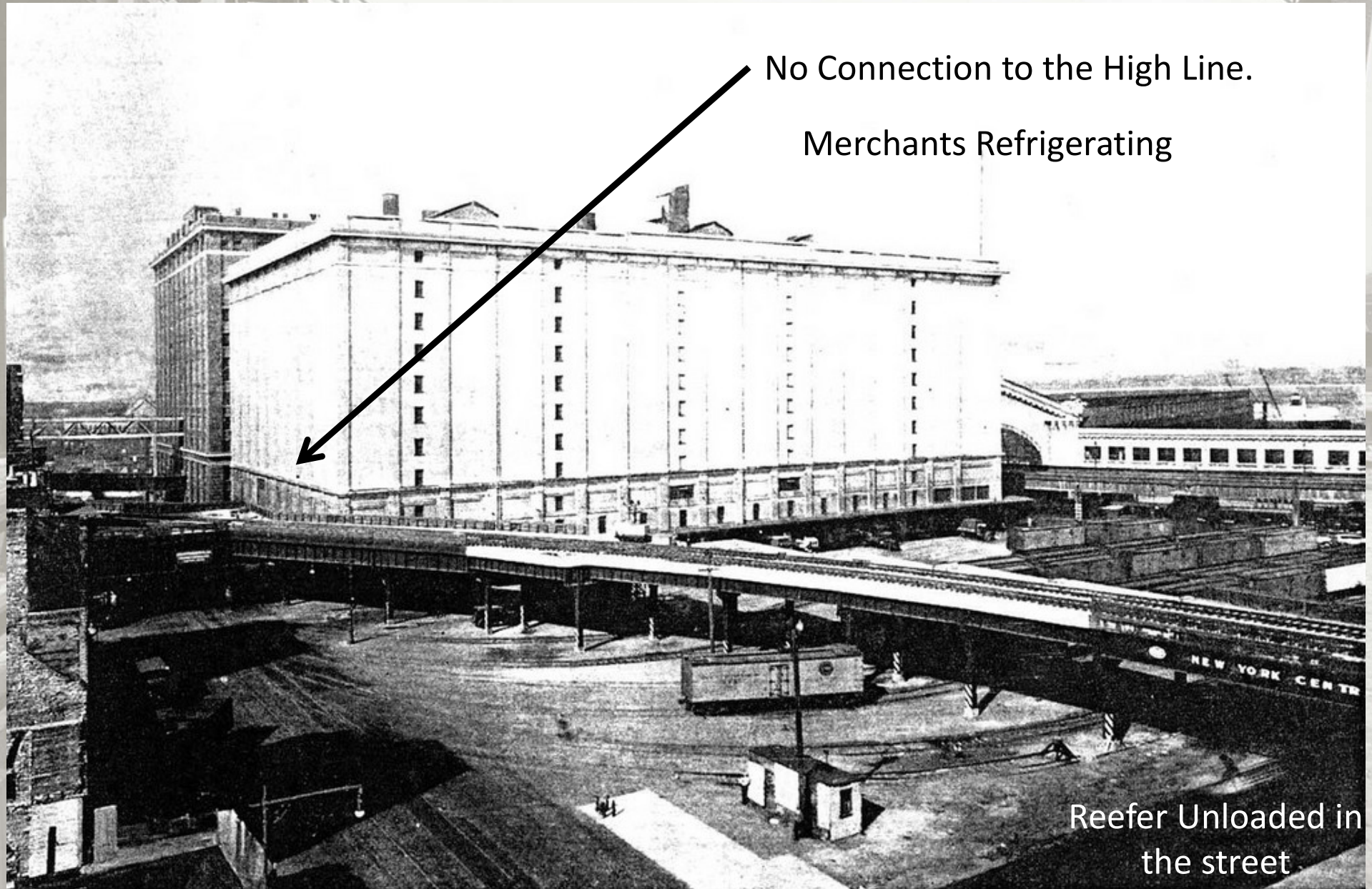
Researching, modeling and operating the New York Central Railroad's High Line In HO Scale

Building the High Line.



Researching, modeling and operating the New York Central Railroad's High Line In HO Scale

Building the High Line.



No Connection to the High Line.

Merchants Refrigerating

Reefer Unloaded in
the street

Researching, modeling and operating the New York Central Railroad's High Line In HO Scale

Building the High Line.



Researching, modeling and operating the New York Central Railroad's High Line In HO Scale

Building the High Line.



Researching, modeling and operating the New York Central Railroad's High Line In HO Scale

The Completed High Line.

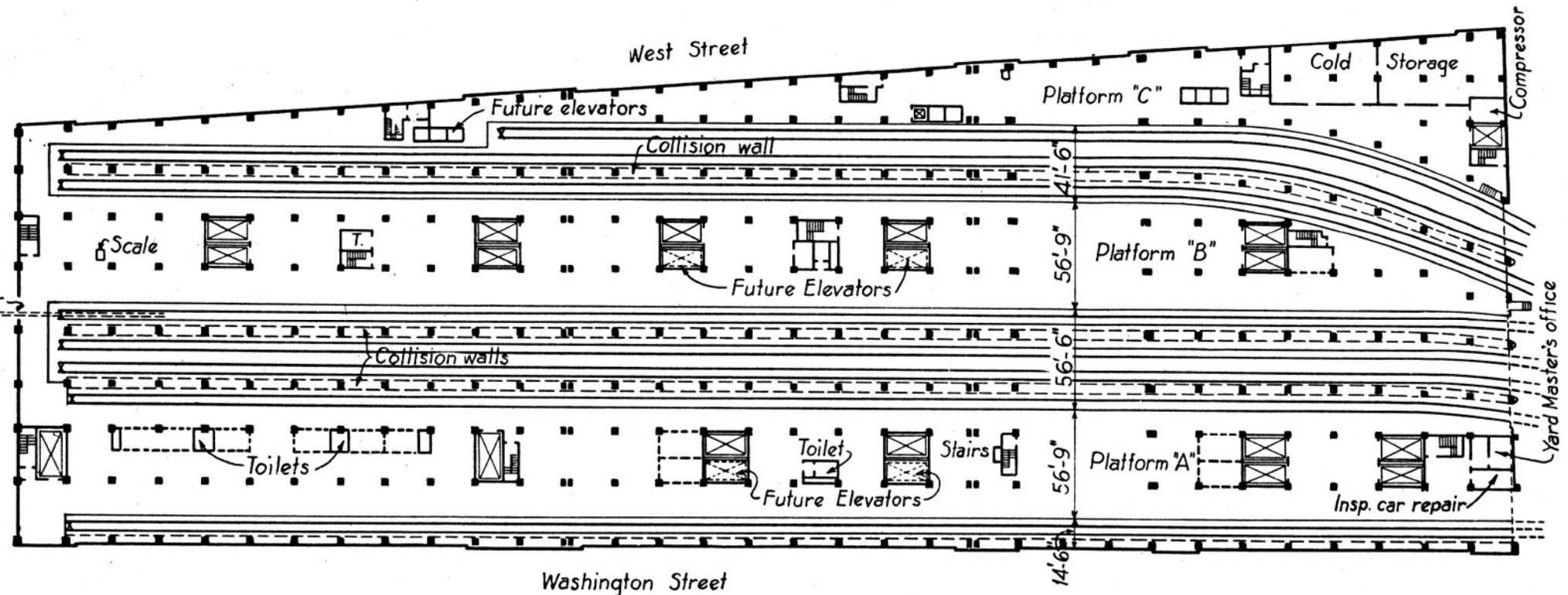
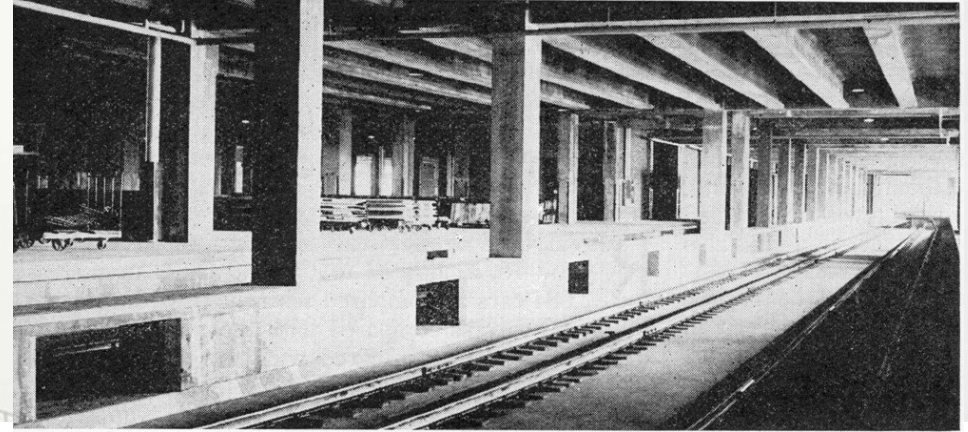


St. John's Park Freight Terminal

8403
No. 58 Taken
N.Y.C. VIND
N.Y.
N.Y. CENT
GEORGE A. FULL

Researching, modeling and operating the New York Central Railroad's High Line In HO Scale

Building the High Line.



General Plan of the Track and Platform Layout on the Second Floor

Researching, modeling and operating the New York Central Railroad's High Line In HO Scale

The Completed High Line.

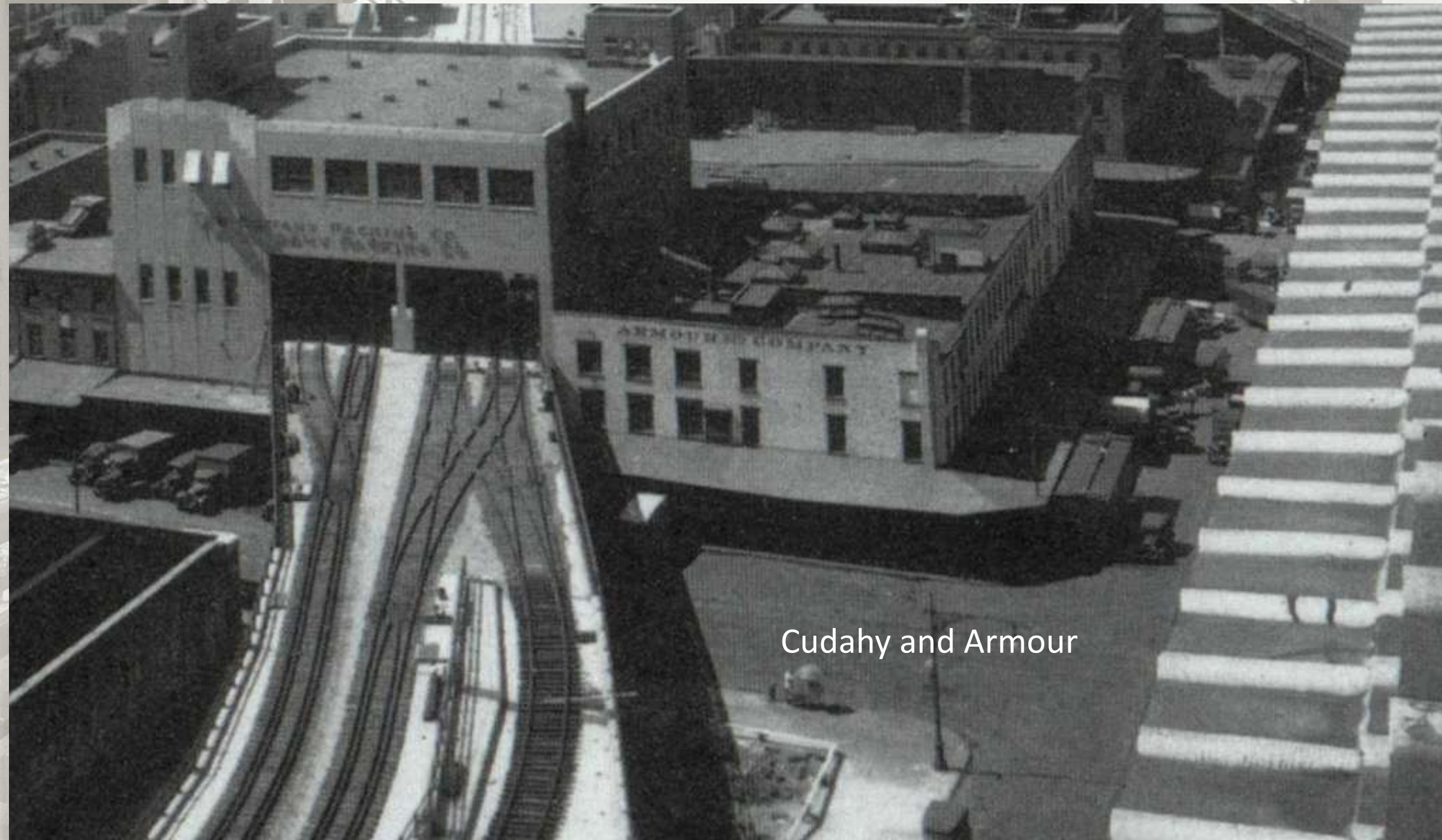
Even though the High Line cut right through Bell Labs it was not serviced by the railroad

8403
No. 58 Taken 6-3-35
N.Y.C. VIADUCT Building
N.Y. City
N.Y. CENTRAL
GEORGE A. FULLER COMPANY



Researching, modeling and operating the New York Central Railroad's High Line In HO Scale

The Completed High Line.



Researching, modeling and operating the New York Central Railroad's High Line In HO Scale

The Completed High Line.



Photo by Tom Flagg and Gerry Weinstein

Researching, modeling and operating the New York Central Railroad's High Line In HO Scale

The Completed High Line.



Researching, modeling and operating the New York Central Railroad's High Line In HO Scale

The Completed High Line.



Researching, modeling and operating the New York Central Railroad's High Line In HO Scale

The Completed High Line.

Photo by Tom Flagg and Gerry Weinstein.



Researching, modeling and operating the New York Central Railroad's High Line In HO Scale

The Completed High Line.



Morgan Post Office

Researching, modeling and operating the New York Central Railroad's High Line In HO Scale

The Completed High Line.

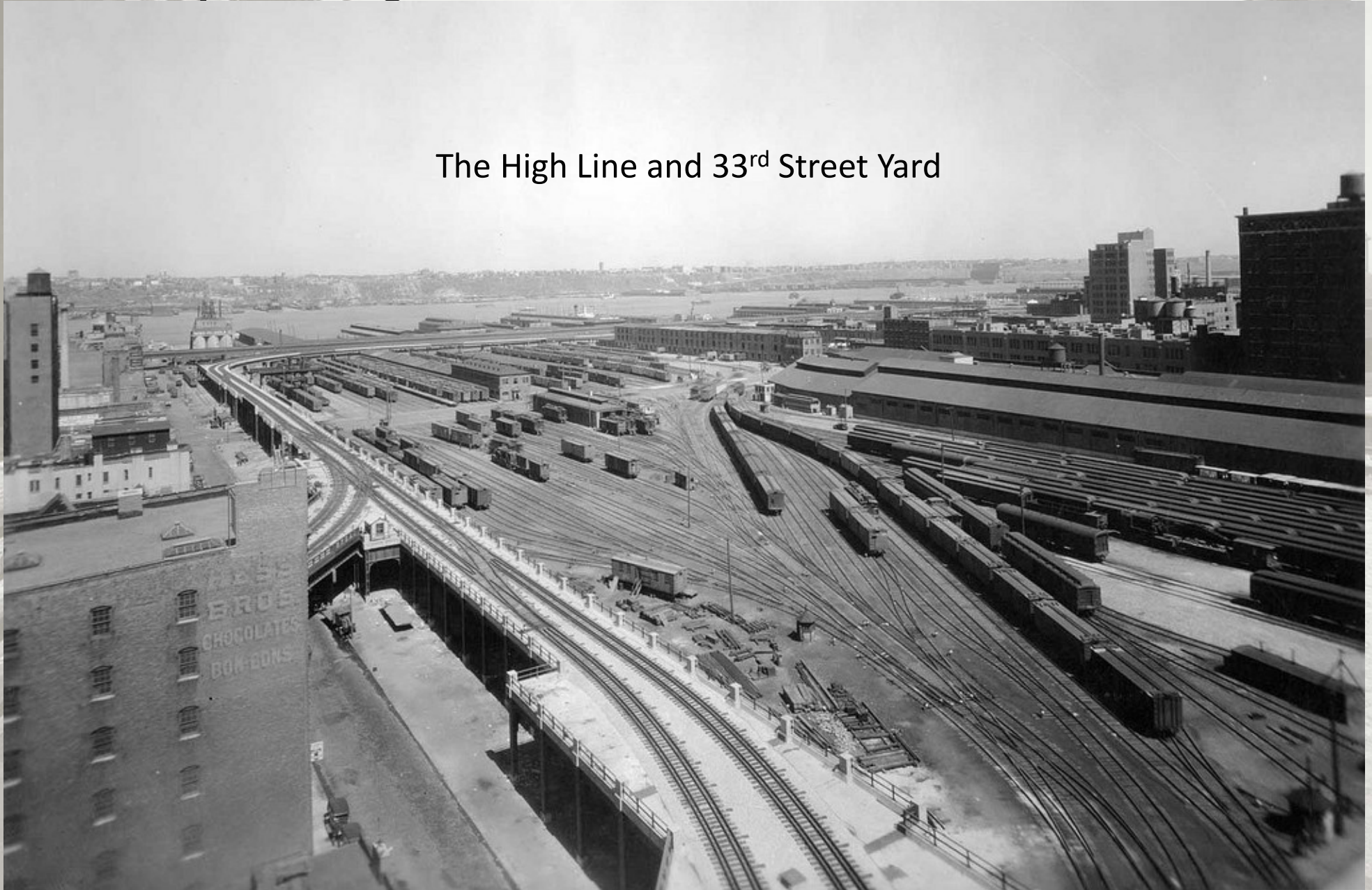


The High Line and 33rd Street Yard

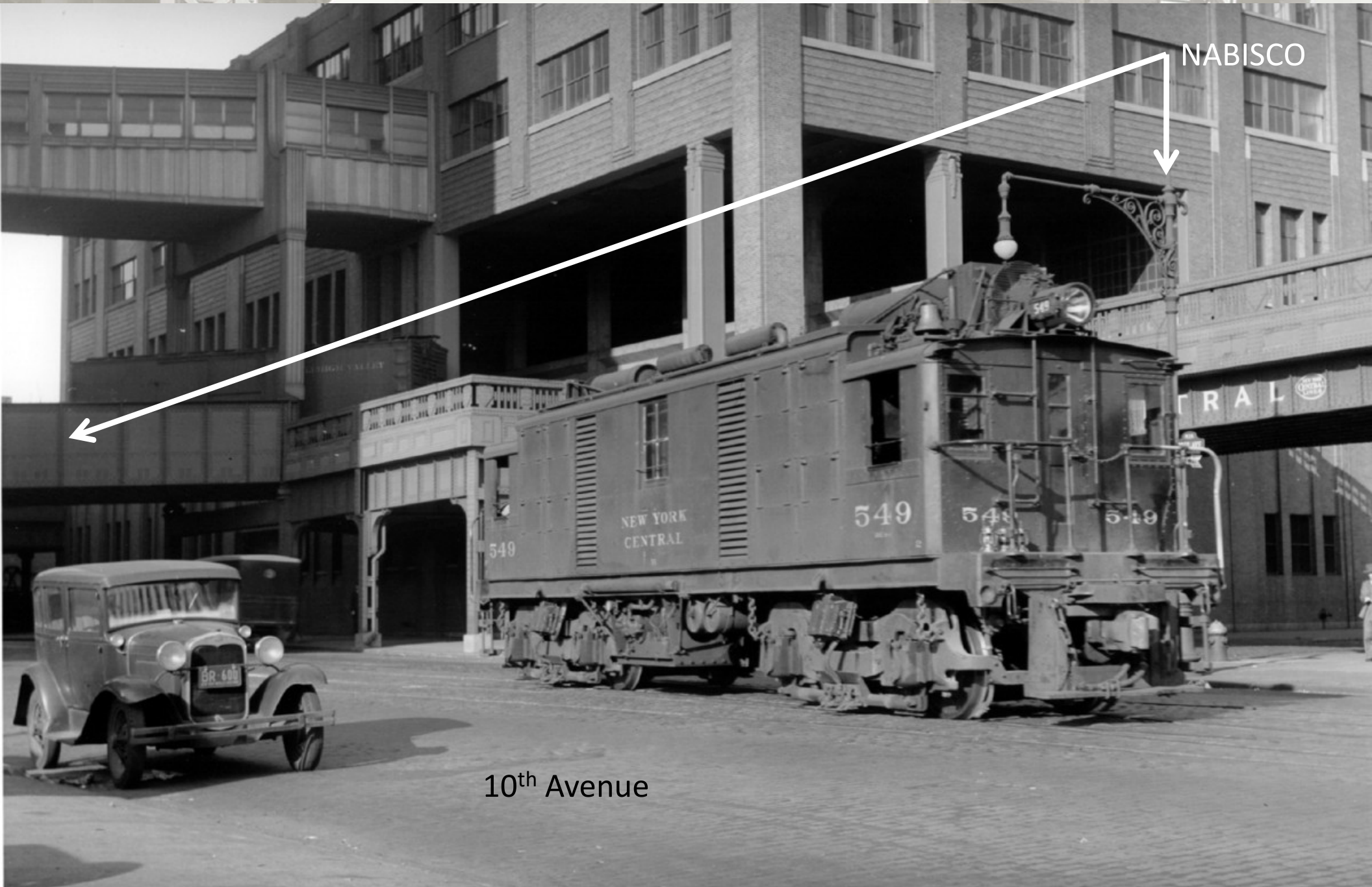
Researching, modeling and operating the New York Central Railroad's High Line In HO Scale

The Completed High Line.

The High Line and 33rd Street Yard



Researching, modeling and operating the New York Central Railroad's High Line In HO Scale



Researching, modeling and operating the New York Central Railroad's High Line In HO Scale

Operations on the High Line.



Researching, modeling and operating the New York Central Railroad's High Line In HO Scale

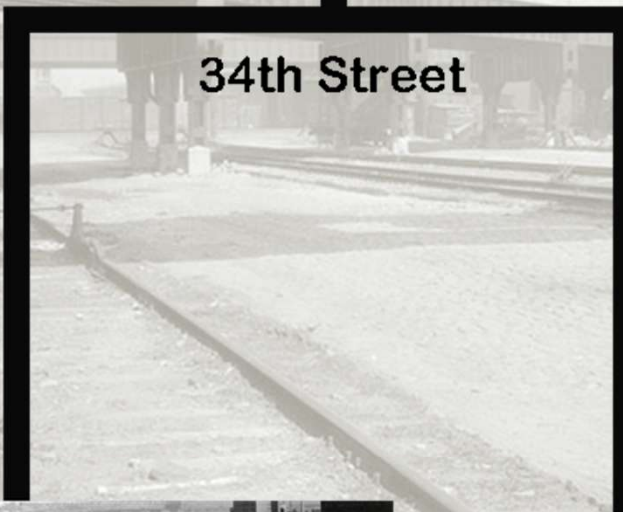
Operations on the High Line.



72nd Street Yard



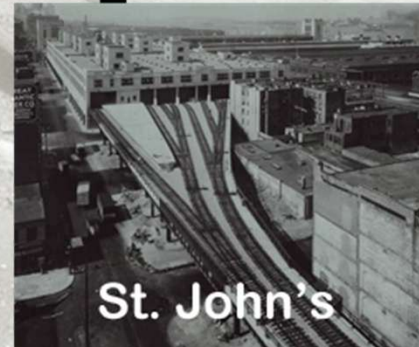
34th Street



High Line



33rd Street Yard



St. John's

8403
No. 58 Taken 6-
N.Y.C. VIADUCT
N.Y.
N.Y. CENTRAL
GEORGE A. FULLER

Researching, modeling and operating the New York Central Railroad's High Line In HO Scale

Operations on the High Line.

West Bound					
Train	Time	Station	Name	Freight	Connections
NB - 1	7:45 PM	33rd Street	Pacemaker	LCL	
NB - 3	9:00 PM	72nd Street		All Freight for Elkhart and Beyond	
LS - 1	10:45 PM	72nd Street		All Freight for Dewitt and West	
NH - 3	11:45 PM	72nd Street		All Freight to Albany and Points East	B&M at Troy
East Bound					
Train	Time	Station	Name	Freight	Connections
NY - 8	6:00 PM	72nd Street			
JS - 2					DL&W, Erie, PRR
BFNY - 4				Perishables / All freight	
SLD - 6					
PW - 4					
NY - 4	12:30 AM	72nd Street			
A/CD - 4				All Freight	
CD - 4					
XN - 2	4:00AM	72nd Street		Live Stock / Perishables/ All Freight	P&LE
2/NY - 6					
HN - 2	4:15 AM	72nd Street		All Freight From Albany and Points East	
BN - 2	7:20 AM	22rd Street	Pacemaker	LCL	

Researching, modeling and operating the New York Central Railroad's High Line In HO Scale

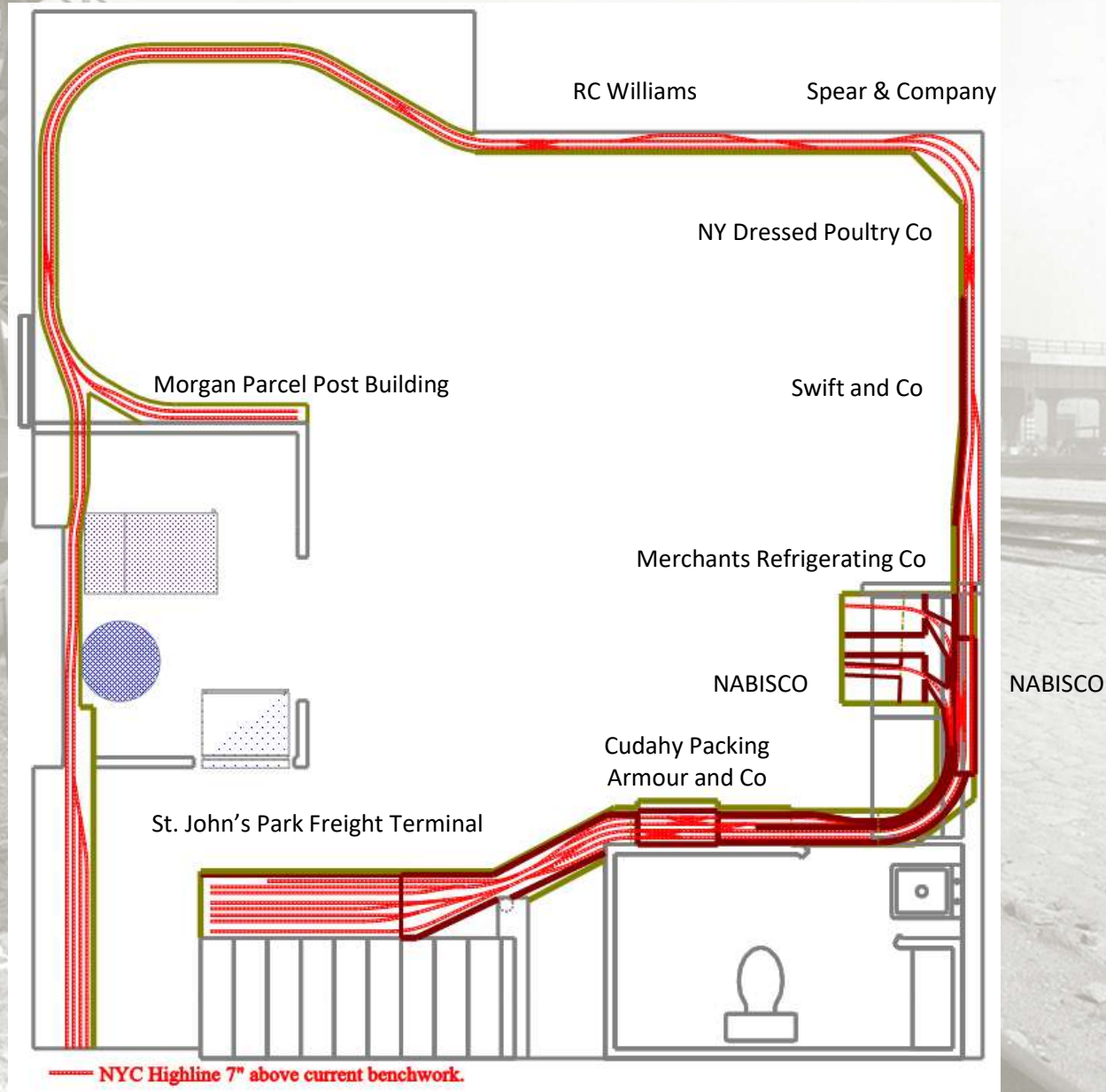
Operations on the High Line.

Industries on the High Line

High Line Sidings and Buildings	St. Johns Park Freight Terminal
Morgan Parcel Post Building	Borden
RC Williams	Colod Corp
Spear & Company	Libby, McNeil & Libby
Merchants Refrigerating Co	Sealright Corp
National Biscuit Co (3 Sidings)	Shannon Bros.
Cudahy Packing	Magazine Shippers Assn.
Armour and Co	Universal Car loading and Distribution
Wilson and Co	F W Woolworth
NYC Cold Storage Warehouse	Western Car loading
NY Dressed Poultry Co.	
Swift and Co	
Gansevoort Public Market	
Manhattan Refrigerated Company	

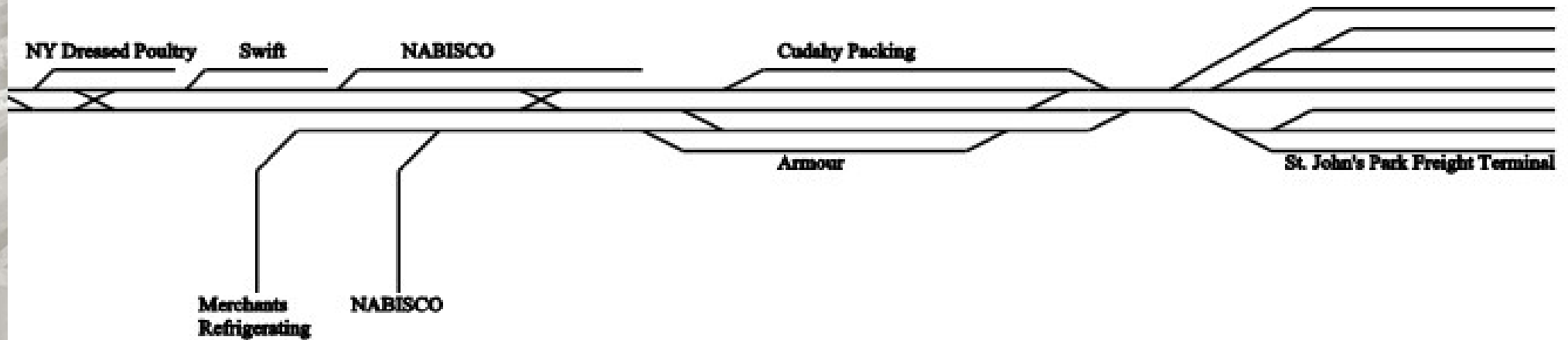
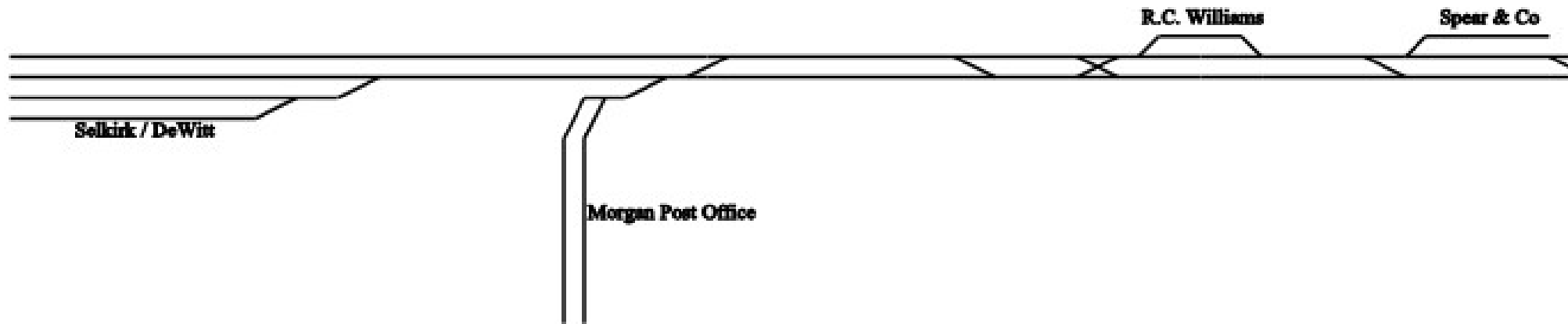
Researching, modeling and operating the New York Central Railroad's High Line In HO Scale

Operations on the High Line in HO Scale.



Researching, modeling and operating the New York Central Railroad's High Line In HO Scale

Operations on the High Line in HO Scale.



Researching, modeling and operating the New York Central Railroad's High Line In HO Scale

Operations on the High Line in HO Scale.

2014



Researching, modeling and operating the New York Central Railroad's High Line In HO Scale

Operations on the High Line in HO Scale.



Researching, modeling and operating the New York Central Railroad's High Line In HO Scale

Operations on the High Line in HO Scale.



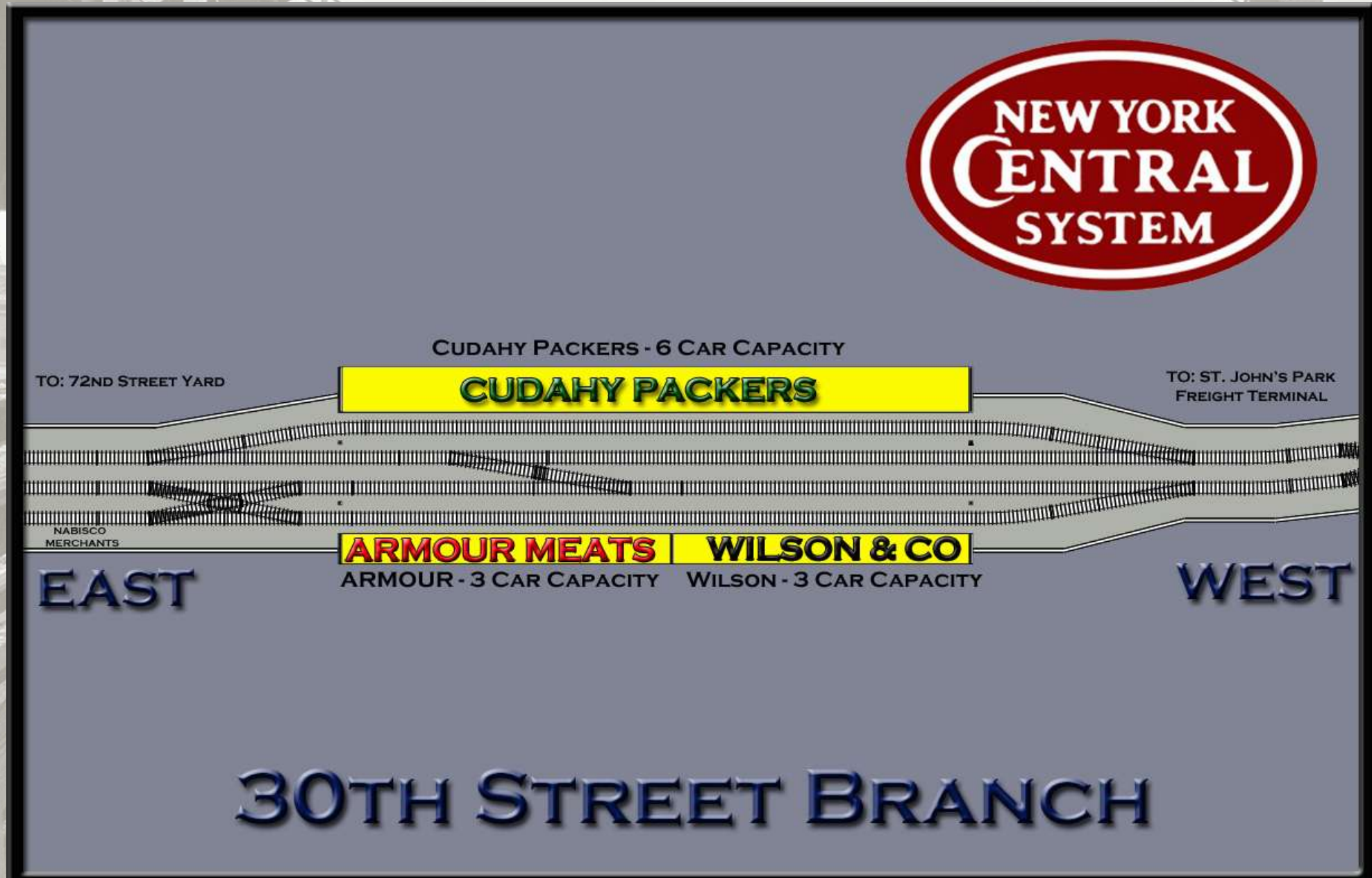
Researching, modeling and operating the New York Central Railroad's High Line In HO Scale

Operations on the High Line in HO Scale.



Researching, modeling and operating the New York Central Railroad's High Line In HO Scale

Operations on the High Line in HO Scale.



Researching, modeling and operating the New York Central Railroad's High Line In HO Scale

Operations on the High Line in HO Scale.



Waybill Only Operations on the High Line in HO Scale.

Model Waybill

Prototype Waybill

Researching, modeling and operating the New York Central Railroad's High Line In HO Scale

What information can be found on a prototype Waybill?

1. Shipping Railroad
2. Car Road Name
3. Car Road Number
4. Destination
5. Routing
6. Consignee
7. Lading
8. Railroad Transfer Stamps
9. Car Type
10. Date / Waybill Number
11. Shipper
12. Receiver Stamp

PLACE SPECIAL SERVICE PASTERS HERE

540—THE NEW YORK CENTRAL RAILROAD COMPANY—540

NEW YORK CENTRAL - BOSTON & ALBANY
MICHIGAN CENTRAL CHICAGO, KALAMAZOO & SAGINAW
CLEVELAND, CINCINNATI, CHICAGO & ST. LOUIS

NYL
APR 14-7 T.T.
ICC 233(e) 3 YRS.
PRINTED IN U.S.A. 10/50

NEW YORK CENTRAL SYSTEM

TO BE USED FOR SINGLE CONSIGNMENTS, CARLOAD AND LESS CARLOAD

1. CAR INITIALS AND NUMBER: 2. IC 35942 3. CAR NAME AT: 2AE 4. STOP THIS CAR: 5. AT: 6. AT: 7. AT: 8. TO NO.: 9. STATION: 10. STATE OR PROV.: 11. FROM NO.: 12. STATION: 13. STATE: 14. ROUTE (Show each Junction and Carrier in Route order to destination of waybill): 15. BENTON HARBOR C&O KEWAUNEE KGB&W 16. ROUTE CODE NO.: 17. Full Name of Shipper, and, for C.O.D. Shipments, Street, Post Office Address, and Invoice Number: 18. PIERSON HOLLOWELL CO INC 19. Code No.: 20. Show "A" if Agent's Routing or "S" if Shipper's Routing: 21. RECONSIGN TO: 22. STATION: 23. STATE OR PROV.: 24. Origin and Date, Original Car, Transfer Freight Bill and Previous Waybill Reference and Routing When Rebillled: 25. AUTHORITY: 26. CONSIGNEE AND ADDRESS: 27. ALGOMA PLYWOOD & VENEER CO 28. DOCK A ALGOMA WISC 29. CODE NO.: 30. Amount: 31. C: 32. FEE: 33. O: 34. TOTAL: 35. D: 36. Pickup Service: 37. Yes: 38. No: 39. Delivery Service Requested: 40. Yes: 41. No: 42. If Charges are to be Prepaid, Write or Stamp Here: 43. "TO BE PREPAID" 44. When Shipper in the United States Executes the No-Recourse Clause of Section 7 of the Bill of Lading, Insert "Yes": 45. Indicate by symbol in Column provided: * how weights were obtained for L.C.L. Shipments only. R—Railroad Scale. S—Shipper's Tested Weights. E—Estimated Weight and Correct. Y—Tariff Classification or Minimum. 46. No. PKGS.: 47. Description of Articles, Special Marks and Exceptions: 48. COMMODITY CODE NO.: 49. WEIGHT: 50. RATE: 51. FREIGHT: 52. ADVANCES: 53. PREPAID: 54. C/L PLAIN WALNUT VENEER 55. LESS THAN 1/16 THICK 56. AS 57. 35200 58. 86 59. 309 60. 61. C.O. RY. 62. AUG 16 1962 63. KGB&WRR 64. AUG 16 1962 65. Kewaunee, Wis. 66. RECEIVED 67. DESTINATION AGENT WILL STAMP HEREIN STATION NAME AND DATE 68. HNAPEE & WESTERN RY. 69. E. F. BUSHMAN, AGT. 70. STURGEON BAY, WIS. 71. COPY FOR A.F.R. 72. 540—THE NEW YORK CENTRAL RAILROAD COMPANY—540

Researching, modeling and operating the New York Central Railroad's High Line In HO Scale

620 Pennsylvania 620 FREIGHT WAYBILL		
TO BE USED FOR SINGLE CONSIGNMENTS, CARLOAD AND LESS THAN CARLOAD		
CAR INITIAL	CAR NUMBER	
AAR CLASS OF CAR ORDERED	LENGTH/COPY OF CAR ORDERED	
GM	53'	
TO STATION STATE	DATE	
33 STREET YARD, NY, NY	1/7/1947	
CONSIGNEE AND ADDRESS	Waybill Number	
STEEL PLATFORM	4701104509	
ROUTE, Show in route order	Indicate how weights were obtained for L.C.L. Shipments only. S - Supplier's T - Tariff Classification or Minimum R - Railroad Scale: R - Estimated	
PRR - NYC	S	
ON C. L. TARIFFS - Instructions Regarding Billing, Vouchering, Milling, Weighing, or Billing Specify to Whom, Billing Should be Charged.		
N.A.		
STOP THIS CAR AT	Blue Island, IL	
AT	DeWitt YARD, Syracuse, NY	
NO. PKGS.	DESCRIPTION OF ARTICLES	
C/L	2" Copper Pipe	
Time Car Spotted at Siding	Time to Unload	TRAIN
<input type="checkbox"/> AM	2.5 HOURS	JS - 2
<input type="checkbox"/> PM		

"A" Side

J-62-47 Form 151 NEW YORK CENTRAL SYSTEM EMPTY CAR BILL	
CAR INITIAL	CAR NUMBER
AAR CLASS OF CAR ORDERED	LENGTH/COPY OF CAR ORDERED
XM	40'
FOR HOME	
Billed from Team Track - 33rd Street Station	
To or Via	R. R.
72nd Street Yard, NY, NY	
FOR LOADING	
Billed from	
TO	
Shipper	Spot
INSTRUCTIONS - This form must accompany all empty foreign cars and must be used in billing private line cars under General Order Ten.	

"B" Side

J-62-47 Form 151 NEW YORK CENTRAL SYSTEM EMPTY CAR BILL	
CAR INITIAL	CAR NUMBER
AAR CLASS OF CAR ORDERED	LENGTH/COPY OF CAR ORDERED
XM	40'
FOR HOME	
Billed from	
To or Via	R. R.
72nd Street Yard, NY, NY	
FOR LOADING	
Billed from 72nd Street Yard, NY, NY	
TO 33rd STREET YARD, NY, NY	
Shipper	Spot
J. T. STANLEY SOAP	
INSTRUCTIONS - This form must accompany all empty foreign cars and must be used in billing private line cars under General Order Ten.	

Alternate "A" Side

Researching, modeling and operating the New York Central Railroad's High Line In HO Scale

Loads can be generated inside a Yard or industry that will need a car to pick it up. On the New York Harbor the “FOR LOADING” portion of the “B” side is then filed out and placed into a load’s waiting bill box.

The Yard master will then assign a car to the waybill and maneuver the empty car to the appropriate location to be load or clean if needed so it can be loaded.

Once the car is spotted at where it is to be loaded this side is crossed out and the car information is transferred to the other side.

With the car information transferred the time that the car was placed at the location is added and the clock starts for loading.

This car starts loading at 7:00 AM and will take 5 hours to load. This means that the car will be ready to send to Buffalo at 12:00 noon.

540 New York Central 540 FREIGHT WAYBILL <small>TO BE USED FOR SINGLE CONSIGNMENTS. CARLOAD AND LESS THAN CARLOAD</small>		
CAR INITIAL NYC	CAR NUMBER 1642239	
AAR CLASS OF CAR ORDERED XM	LENGTH/COPY OF CAR ORDERED 40'	
TO STATION STATE Buffalo, NY	DATE 1/15/1947	
CONSIGNEE AND ADDRESS FREIGHT HOUSE	Waybill Number 4701105582	
ROUTE <small>Show in route order</small> NYC	<small>Indicate how weights were obtained for L.C.I. Shipments only. S - Shipper's T - Tariff Classification or Minimum R - Railroad Scale E - Estimated.</small> E	
<small>NYC L. TARIFF - Instructions Regarding Tare, Ventilation, Milling, Weighing, etc. If load Spotted to Whom Tare Should be Charged.</small> N/A		
STOP THIS CAR DeWitt YARD, Syracuse, NY		
AT		
AT		
NO. PKGS. C/L	DESCRIPTION OF ARTICLES Soap Products	
Time Car Spotted at Siding 7:00	<input checked="" type="checkbox"/> AM <input type="checkbox"/> PM	Time to Unload 5 HOURS

No. 58 Taken 6-3-35
N.Y.C. VIADUCT Building
N.Y. City
N.Y. CENTRAL
GEORGE A. FULLER COMPANY

Researching, modeling and operating the New York Central Railroad's High Line In HO Scale

J-62-47		Form 151	
NEW YORK CENTRAL SYSTEM			
EMPTY CAR BILL			
CAR INITIAL PRR		CAR NUMBER 2319	
AAR CLASS OF CAR ORDERED XM		LENGTH COPY OF CAR ORDERED 40'	
FOR HOME			
Billed from Team Track – 33 rd Street Station			
To or Via 72 nd Street Yard, NY, NY R. R.			
FOR LOADING			
Billed from			
TO			
Shipper		Spot	
INSTRUCTIONS – This form must accompany all empty foreign cars and must be used in billing private line cars under General Order Ten.			

This waybill is waiting for a car to be assigned to it so it can be placed on either a scheduled train or a extra.

With the assigning of this waybill to a Pennsylvania Railroad Mill Gondola Number 2319, it is placed on the active staging track and is ready to go out on Train JS-2 to 33rd Street Yard.

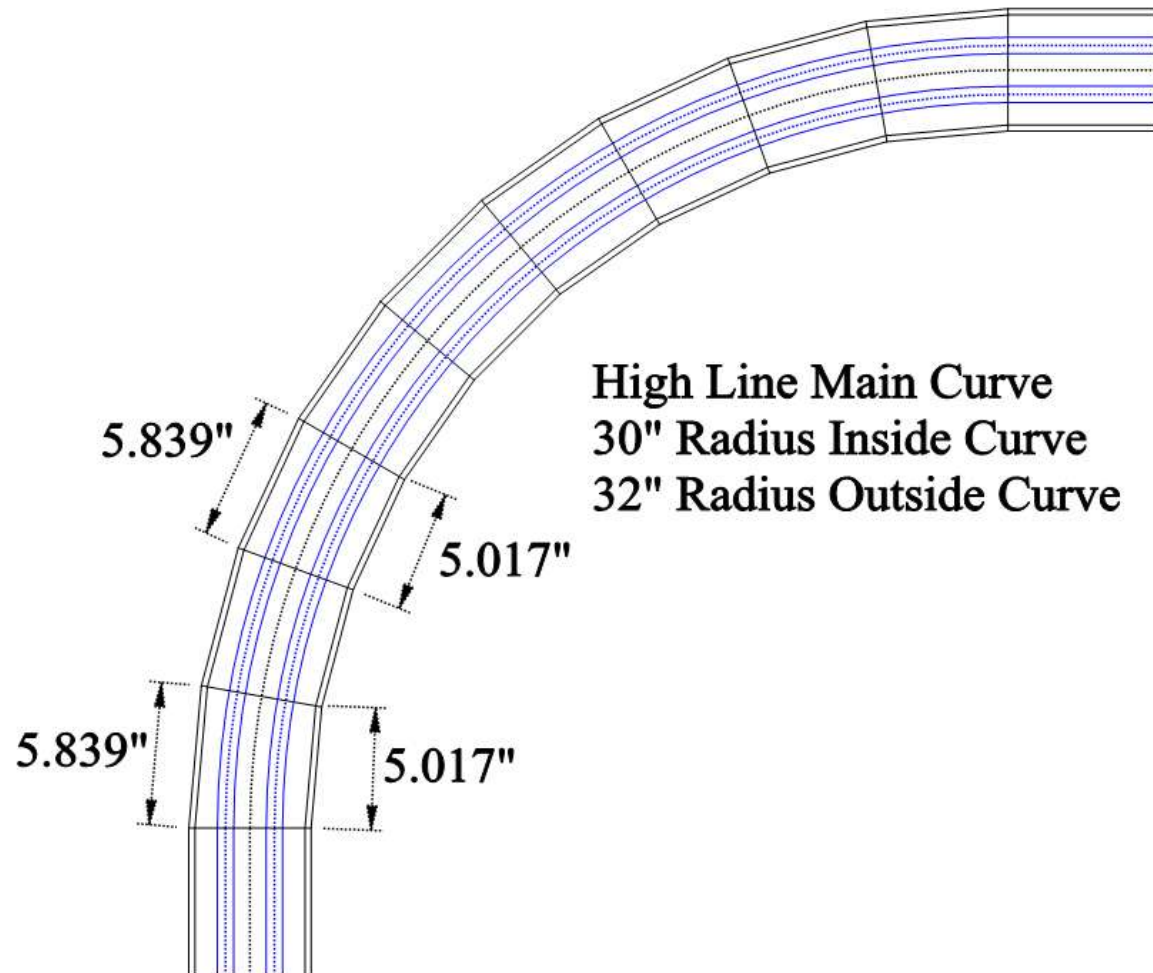
Once the car is place at the Steel Platform the arrival time is noted on the waybill. Then the clock starts to when the waybills actions are completed.

This car was placed at the siding a 3:30 PM. After 6:00 PM or 2 ½ Hours later the car has been unloaded and this waybill has been completed. The waybill is crossed our and the car information is transferred to the “B” side.

Researching, modeling and operating the New York Central Railroad's High Line In HO Scale

Current High Line Re-Construction.

The original High Line structures on the layout over 33rd Street was torn down on January 2010. I have started, with the much help from my work crews, to rebuild the High Line into a prototypic structure. The following is showing the progress of that work.



Researching, modeling and operating the New York Central Railroad's High Line In HO Scale

Current High Line Re-Construction.



1/8" Styrene

Researching, modeling and operating the New York Central Railroad's High Line In HO Scale

Current High Line Re-Construction.



Researching, modeling and operating the New York Central Railroad's High Line In HO Scale

Current High Line Re-Construction.



Researching, modeling and operating the New York Central Railroad's High Line In HO Scale

Current High Line Re-Construction.

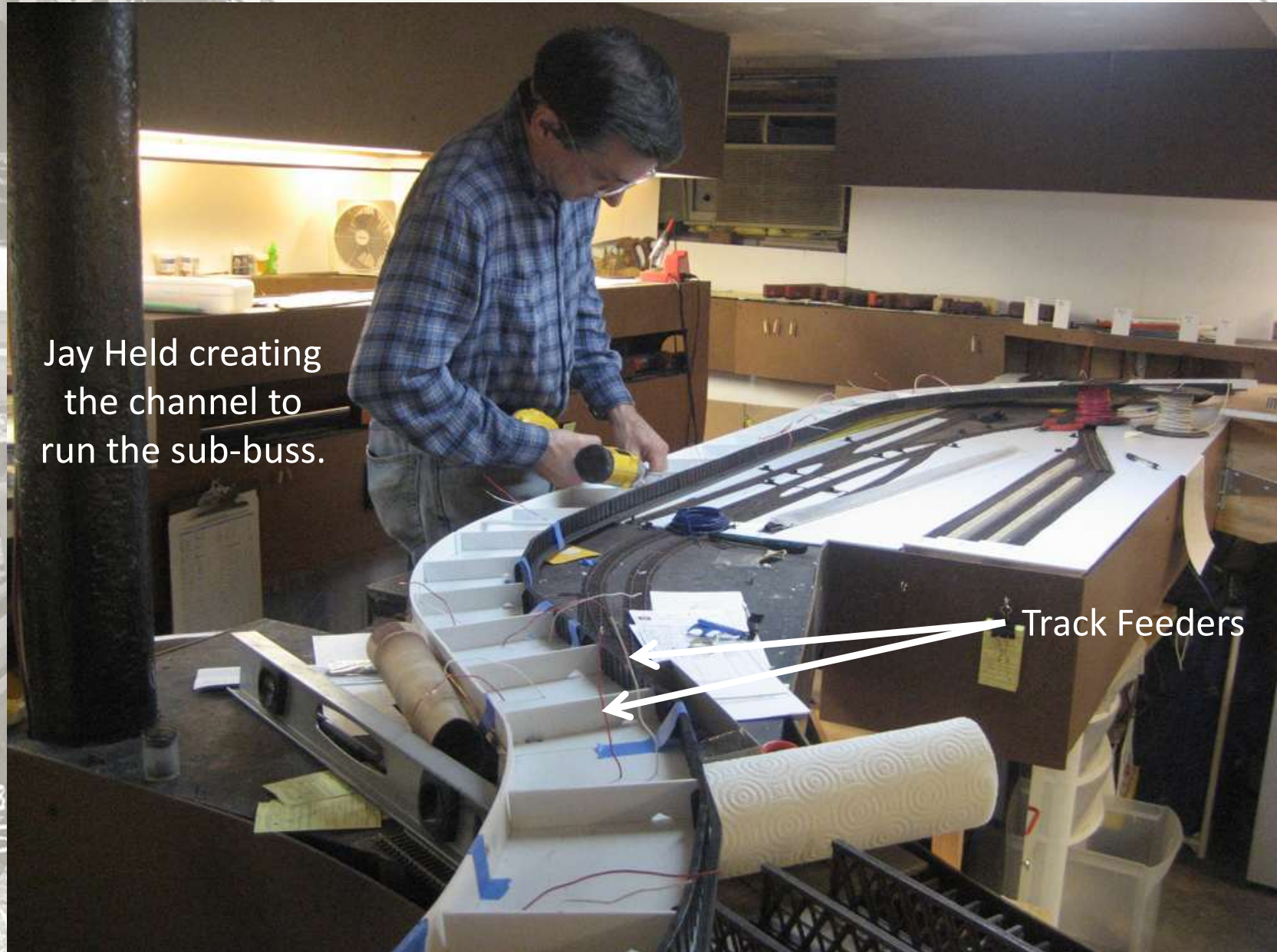


Researching, modeling and operating the New York Central Railroad's High Line In HO Scale

Current High Line Re-Construction.

Jay Held creating the channel to run the sub-buss.

Track Feeders



Researching, modeling and operating the New York Central Railroad's High Line In HO Scale

Current High Line Re-Construction.



Researching, modeling and operating the New York Central Railroad's High Line In HO Scale

Current High Line Re-Construction.



Researching, modeling and operating the New York Central Railroad's High Line In HO Scale

Current High Line Re-Construction.



As of November 17, 2010

Researching, modeling and operating the New York Central Railroad's High Line In HO Scale

Current High Line Re-Construction.



Researching, modeling and operating the New York Central Railroad's High Line In HO Scale

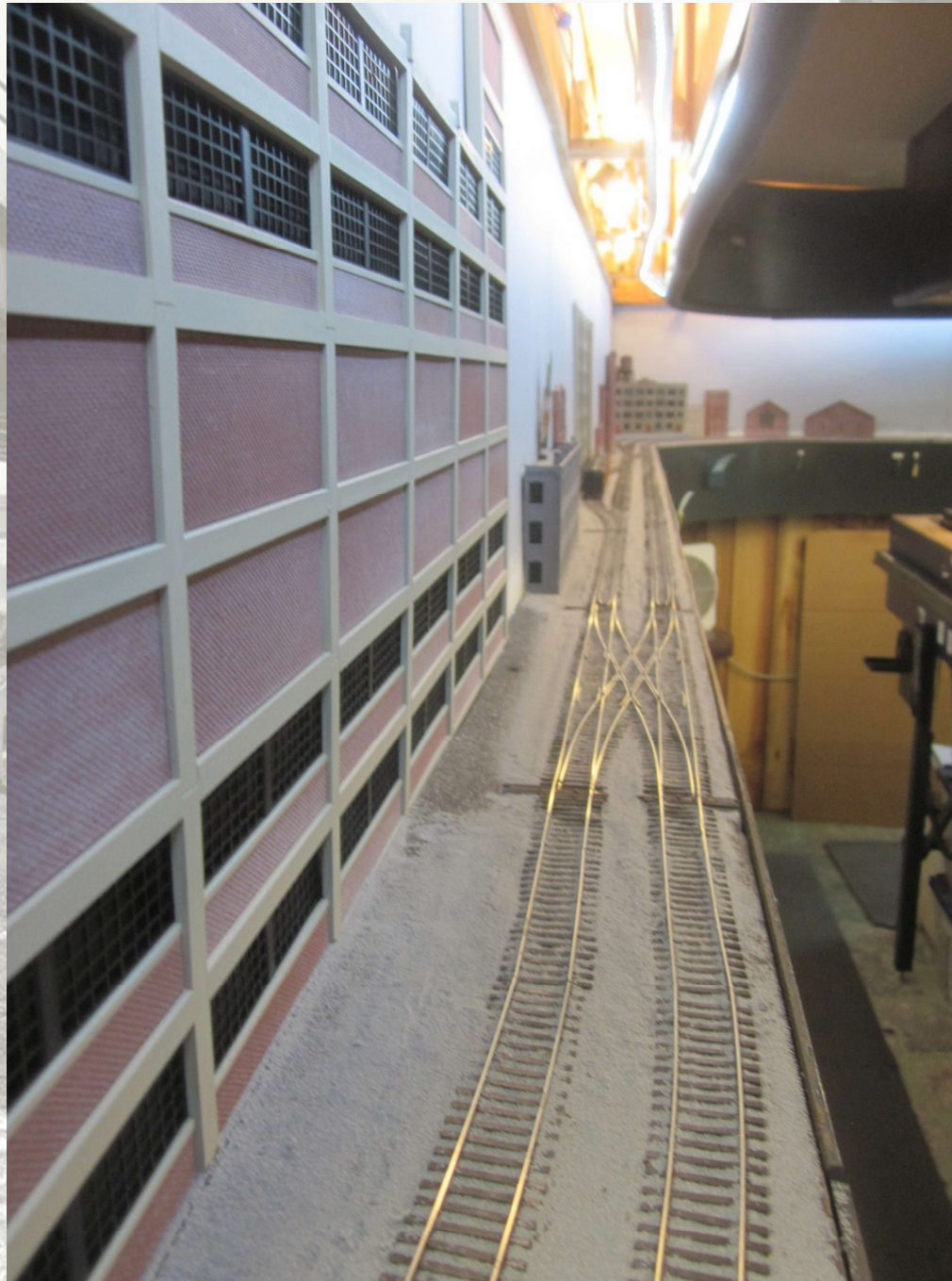
Current High Line Re-Construction.



Researching, modeling and operating the New York Central Railroad's High Line In HO Scale



Researching, modeling and operating the New York Central Railroad's High Line In HO Scale



Researching, modeling and operating the New York Central Railroad's High Line In HO Scale

Special Thanks to my work and operations crews! No Really

Craig Bisgeier

Tom Callan

Ted Dilorio

Neil Henning

Jay Held

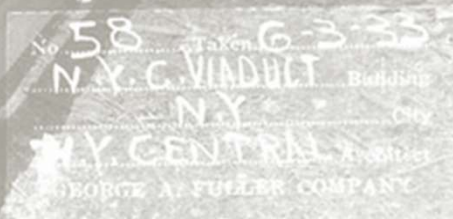
Ralph Heiss

Ted Pamperin

Phil Monat

Ray Lewis

Special Thanks to.....



Researching, modeling and operating the New York Central Railroad's High Line In HO Scale

....

Ron Parisi

Thom Flagg

Anthony Thompson

Rail Marine SIG

OP-SIG

Friends of the High Line (New York Central Construction Photo's)

Mike MacDonald's Photo Bucket Site (Old New York Photos)

Bob's Photos

Bing Maps



Researching, modeling and operating the New York Central Railroad's
High Line In HO Scale

QUESTIONS?



Researching, modeling and operating the New York Central Railroad's
High Line In HO Scale

Thank You!



Operating the first Friday of the month!

Dramos_1701@yahoo.com

<http://www.hyhrr.com>



N.Y. CENTRAL Bldg.
GEORGE A. FULLER COMPANY